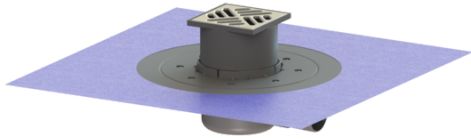


The Superflat bathroom drain glued flange, DN 50, Slotted grating



Article information

Item no.: 42701.91
 GTIN: 4026092029657
 Price group: 10

Advantages

- Movable outlet socket
- Lip seal fixed on the drain body
- Side inlet via odour trap

Description

The Superflat bathroom drain is suitable for indoor floor drainage. The drain made of PP is equipped with a secure, reliably installed seal as well as a removable odour trap.

Variant

Sealing water height: 30 mm
 Discharge rate (l/s) with 20 mm backwater: 0,8

General characteristics

Nominal size (DN): 50
 Outer diameter (OD): 50 mm

Dimensions

Vertical adjustment: 19 - 27 mm
 Net weight: 0,99 kg
 Gross weight: 1,21 kg
 Cutout dimension, width: 350 mm
 Cutout dimension, length: 350 mm
 Vertical adjustment: vertically adjustable upper section
 Length: 332 mm
 Width: 332 mm
 Packaging dimension: length
 Packaging dimension: width
 Packaging dimension: height

Tank/drain body

Number of outlets: 1
 Inlet nominal size (DN): 40 mm
 Inlet type: 1
 Material of drain body: PP

Coverage features

| | |
|-------------------------|-----------------------|
| Type of cover: | Slotted cover |
| Cover material: | Stainless steel 14301 |
| Colour of cover: | silver |
| Width of cover: | 100 mm |
| Length of cover: | 100 mm |
| Frame material: | PP |
| Cover locking: | placed |
| Load class: | K 3 (EN 1253-1) |
| Rim length: | 107 mm |
| Rim material: | 107 mm |
| Upper section material: | PP |
| Odour trap: | included |