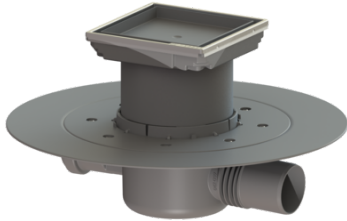


## The Superflat bathroom drain glued flange, DN 50, tileable



### Article information

Item no.: 42701.95  
GTIN: 4026092029664  
Price group: 10

### Advantages

- Movable outlet socket
- Lip seal fixed on the drain body
- Side inlet via odour trap

### Description

The Superflat bathroom drain is suitable for indoor floor drainage. The drain made of PP is equipped with a secure, reliably installed seal as well as a removable odour trap.

#### Variant

Sealing water height: 30 mm  
Discharge rate (l/s) with 20 mm backwater: 0,8

#### General characteristics

Nominal size (DN): 50  
Outer diameter (OD): 50 mm  
purchasable by service partner: No

#### Dimensions

Vertical adjustment: 25 - 90 mm  
Net weight: 0,93 kg  
Gross weight: 1,17 kg  
Cutout dimension, width: 350 mm  
Cutout dimension, length: 350 mm  
Vertical adjustment: vertically adjustable upper section  
Length: 332 mm  
Width: 332 mm  
Packaging dimension: length  
Packaging dimension: width  
Packaging dimension: height

#### Tank/drain body

Number of outlets: 1  
Inlet nominal size (DN): 40 mm  
Inlet type: 1  
Material of drain body: PP

**Coverage features**

|                         |                       |
|-------------------------|-----------------------|
| Type of cover:          | tileable cover plate  |
| Cover material:         | tileable              |
| Colour of cover:        | selectable            |
| Width of cover:         | 110 mm                |
| Length of cover:        | 110 mm                |
| Frame material:         | Stainless steel 14301 |
| Cover locking:          | placed                |
| Load class:             | K 3 (EN 1253-1)       |
| Rim length:             | 110 mm                |
| Rim material:           | 110 mm                |
| Upper section material: | PP                    |
| Odour trap:             | included              |