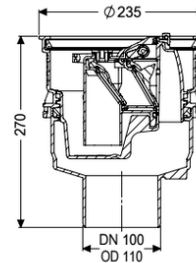
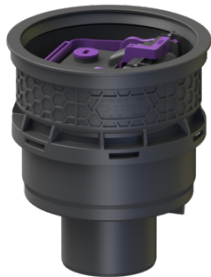


Universal Plus basement drain vertical, with backwater valve



Article information

Item no.: 27660
 GTIN: 4026092096949
 Price group: 10

Advantages

- Sustainable due to use of recycled material
- Inlets above the floor slab, no penetration required
- Vertical outlet for easy installation and easy access to the main drainage pipe

Description

In combination with an upper section, the polymer Universal Plus drain body is used for drainage of non-faecal wastewater and is equipped with a removable backwater valve with two backwater flaps, a one hand-lockable emergency closure and a sludge bucket. Including temporary protective cover.

Variant

Contents of sludge trap:	yes
Emergency closure:	yes
Waterproof flange:	without
Sealing water height:	60 mm
Mechanical backwater flaps:	2

General characteristics

Colour:	black
Standard:	EN 1253
Nominal size (DN):	100
Type of wastewater:	without sewage
Installation situation:	floor slab installation
Backwater protection:	Type 5

Dimensions

Net weight:	1,85 kg
Gross weight:	2,34 kg

Diameter:	235 mm
Cutout dimension, width:	310 mm
Cutout dimension, length:	310 mm
Vertical adjustment:	vertically adjustable upper section
Height:	270 mm
Packaging dimension:	length
Packaging dimension:	width
Packaging dimension:	height
Tank/drain body	
System:	vertical
Coverage features	
Contents of sludge trap:	yes
Odour trap:	no