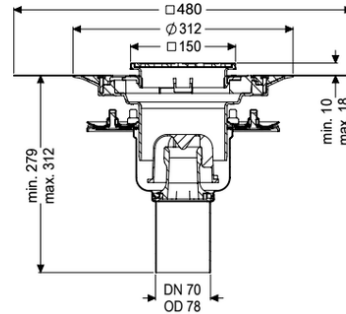
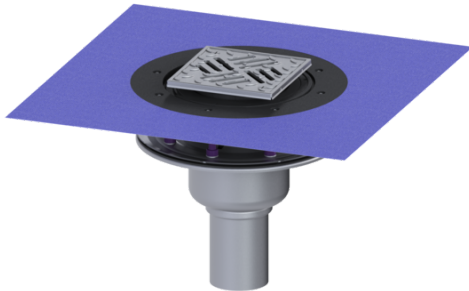


## Ferrofix floor drain press, fl. DN 70, vert, Waterpr layer, Slot grt



### Article information

Item no.: 54210.52  
GTIN: 4026092056349  
Price group: 70

### Advantages

- Made of particularly hygienic and mechanically highly resistant stainless steel
- High flow rate

### Description

The Ferrofix stainless steel floor drain is used for point drainage and is equipped with a pressure sealing flange as well as a removable odour trap made of stainless steel, a lip seal and a temporary protective cover. The pressure sealing flange with bolts and screws made of stainless steel is used for the clamping or welding of bitumen and polymer bitumen sheets as well as for polymer and elastomer sealing sheets. The outlet socket is suitable for connection to SML cast iron pipes. With connection option for equipotential bonding.

Variant

System:

Waterproofing layer on the upper section:

Waterproofing layer on the drain body:

Sealing water height:

125

Enclosed sealing collar to be glued (bd) according to DIN 18534

Press sealing flange (suitable for creating watertight seals)

50 mm

General characteristics

Standard:

Nominal size (DN):

Outer diameter (OD):

Inlet max. scoring (DN):

EN 1253-1

70

78 mm

Z-19.53-2414,Z-19.17-1719

Dimensions

Vertical adjustment:

Net weight:

10 - 18 mm

4,49 kg

Gross weight:	5,48 kg
Vertical adjustment:	vertically adjustable upper section
Length:	273 mm
Width:	273 mm
Packaging dimension:	length
Packaging dimension:	width
Packaging dimension:	height
Tank/drain body	
Number of outlets:	1
Material of drain body:	Stainless steel 14301
System:	vertical
Coverage features	
Type of cover:	Slotted cover
Cover material:	Stainless steel 14301
Width of cover:	138 mm
Length of cover:	138 mm
Surface:	Polished SST
Cover locking:	screwed
Load class:	L 15 (EN 1253-1)
Slip resistance class:	R11 according to DIN 51130; C according to DIN 51097
Rim length:	150 mm
Rim material:	150 mm
Upper section:	adjustable in three dimensions
Shape of upper section:	square
Upper section material:	ABS
Odour trap:	included