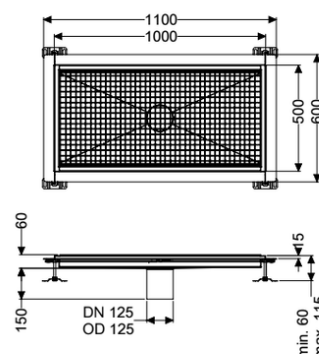
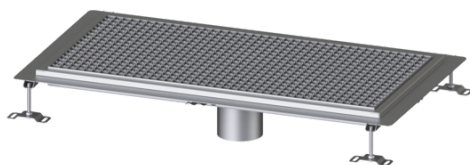


## Floor Tray Ferrofix glued flange H: 15mm, 500x1000mm



### Article information

Item no.: 6050100  
GTIN: 4026092054710  
Price group: 80

### Advantages

- Made of particularly a hygienic and mechanically highly resistant stainless steel
- Variably combinable with suitable drain bodies

### Description

#### Variant

Waterproofing layer on the upper section:  
Water supply:  
Glued flange height:

Adhesive flange (suitable for moisture barriers)  
W3-I  
15 mm

#### General characteristics

Nominal size (DN): 125  
Outer diameter (OD): 125 mm  
Glued flange height: 15 mm

#### Dimensions

Net weight: 23 kg  
Gross weight: 23 kg  
Width: 500 mm  
Height: 60 mm  
Length: 1000 mm  
Packaging dimension: width  
Packaging dimension: height  
Packaging dimension: length

#### Coverage features

Type of cover: Slotted cover  
Colour of cover: silver  
Cover locking: placed

Load class:	L 15 (EN 1253-1)
Slip resistance class:	R12 according to DIN 51130; C according to DIN 51097
Upper section material:	Stainless steel 14301