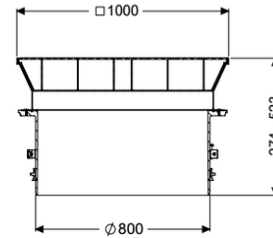
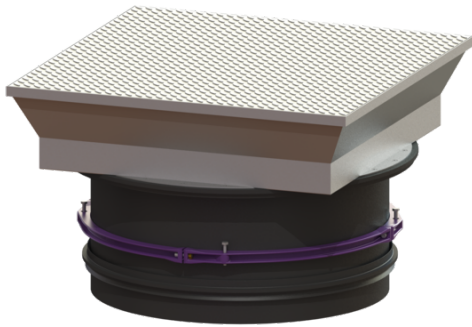


## Upper section Square cover plate, LW 800, Class D



### Article information

Item no.: 8740180  
 GTIN: 4026092070468  
 Price group: 60

### Description

Upper section for continuous height and level compensation for chamber module LW 1000, consisting of a drive-over, flush-to-ground cover for setting in concrete, with inner joints, all-round frost- and weather-proof seal, gas spring as an opening aid incl. self-effective arresting device. An all-round concrete ring must be prepared on site. Suitable for taper with 800 mm access.

#### General characteristics

Colour:	black
Material:	Polymer
purchasable by service partner:	No

#### Dimensions

Net weight:	152,37 kg
Gross weight:	170,1 kg
Clear width (LW):	800 mm
Vertical installation:	274 - 523
Packaging dimension:	length
Packaging dimension:	width
Packaging dimension:	height

#### Coverage features

Type:	surface water resistant
Surface:	Stainless steel
Cover locking:	screwed
Load class:	D 400 (EN 124)