


### Twin flap backwater valve *Staufix Siphon* Ø 50

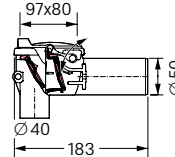
Installation in an exposed wastewater pipe



TÜV Rheinland Germany type tested and monitored  EN 13564 Type 5

Made of polymer.

Twin flaps, self-closing, one of which can be locked by hand as an emergency closure, incl. wall attachment, inlet connection Ø 40 (1 1/2 inch) at pipe odour trap. Outlet Ø 50 for connection to HT-pipe according to EN 1451-1.



Outer diameter Ø (mm)	Art. no.
Ø 50	73 051

### Twin flap backwater valve *Staufix Siphon* Ø 50

Installation in an exposed wastewater pipe



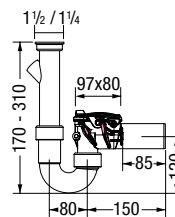
TÜV Rheinland Germany type tested and monitored  EN 13564 Type 5

Made of polymer.

Twin flaps, self-closing, one of which can be locked by hand as an emergency closure, incl. wall attachment, outlet Ø 50 for connection to HT-pipe according to EN 1451-1.

**Model contains:**

- pipe odour trap
- washing machine connection



Outer diameter Ø (mm)	Art. no.
Ø 50	73 052

### Twin flap backwater valve *Staufix Siphon* Ø 50

Installation in an exposed wastewater pipe



TÜV Rheinland Germany type tested and monitored  EN 13564 Type 5

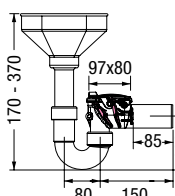
Made of polymer.

Two flaps, self-closing, one of which can be locked by hand as an emergency closure, incl. wall attachment. Outlet Ø 50 for connection to an HT-pipe according to EN 1451-1.

**Model contains:**

- pipe odour trap
- inlet funnel

**Installation:** Ideal for the emergency overflow of heating systems



Outer diameter Ø (mm)	Art. no.
Ø 50	73 053