

Lifting station *Aqualift S Compact Mono*

for installation in a concrete slab / floor



TÜV Rheinland Germany type tested and monitored

EN 12050-2

Tank volume: 65 liters

Pump volume: 16 liters

Polyethylene storage chamber

for installation in a concrete slab/floor,
installation depth (D) 490 to 620 mm,
with lateral inlet \varnothing 110 mm.
Installation area 700 × 700 mm.

Upper section and cover

Vertically and laterally adjustable upper section,
with black / recessed cover for on-site tiling,
integrated drain, made of polymer, load class K 3,
with moisture protective sealing flange.

Pump

Single removable *GTF* pump for wastewater
without sewage, float switch / air pressure sensor
controlled with multi-vane impeller, with integrated
non-return flap, pumping volume 16 liters (*GTF 500* /
GTF 1200), pressure pipe connection \varnothing 40 mm.

Control unit

Tronic versions with SDS control unit (self-diagnosis
system) for fully automatic pump control, splash
water protected (IP 54), wall mounted.

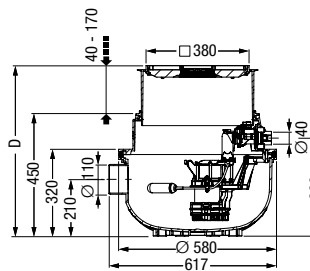
Power cable length: 5 m

Note: A ventilation pipe must be provided for on site.

Accessories: page 127 – 133

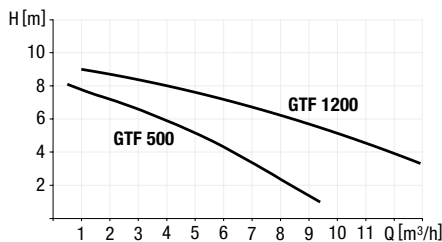


Illustration shows Art. no. 280 500X



GTF pump	Voltage	Art. no.
With recessed cover for on-site tiling		
500-S1	230 V	280 500X
500-S1 resistant	230 V	280 500XC
1200-S3	230 V	281 200X
1200-S3 resistant	230 V	281 200XC
With black cover		
500-S1	230 V	280 500S
500-S1 resistant	230 V	280 500SC
1200-S3	230 V	281 200S
1200-S3 resistant	230 V	281 200SC

Pumping capacity



Pump type	Voltage	Amperage	Power P1/P2	RPM	Pumping height	Pumping capacity
GTF 500-S1*	230 V ~ 50 Hz	2.7 A	0.6 kW / 0.36 kW	2800 min ⁻¹	8 m	10 m ³ /h
GTF 500-S1 resistant*	230 V ~ 50 Hz	2.7 A	0.6 kW / 0.36 kW	2800 min ⁻¹	8 m	10 m ³ /h
GTF 1200-S3*	230 V ~ 50 Hz	6.2 A	1.4 kW / 0.84 kW	2650 min ⁻¹	9 m	15.5 m ³ /h
GTF 1200-S3 resistant*	230 V ~ 50 Hz	6.2 A	1.4 kW / 0.84 kW	2650 min ⁻¹	9 m	15.5 m ³ /h

*Definition of S1 and S3-pumps see page 97