

Lifting station *Minilift S*

For installation in a concrete floor / slab



TÜV Rheinland Germany type tested and monitored

CE EN 12050-2

Tank volume: 26 liters

Pump volume: 7 liters

Polyethylene storage chamber for installation in a concrete slab/floor, installation depth (D) 330 to 460 mm, with lateral inlet \varnothing 50 mm. Installation area 600 × 600 mm.

Upper section and cover

Vertically and laterally adjustable upper section, with black / recessed cover for on-site tiling, integrated drain, made of polymer, load class K 3, with moisture protective sealing flange.

Pump

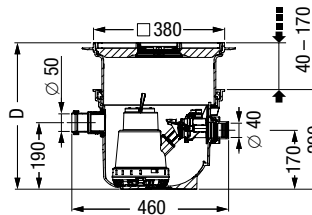
Single removable *KTP* pump for wastewater without sewage, float switch, with multi-vane impeller, with integrated non-return flap, pressure pipe connection 40 mm.



Illustration shows Art. no. 280 570X

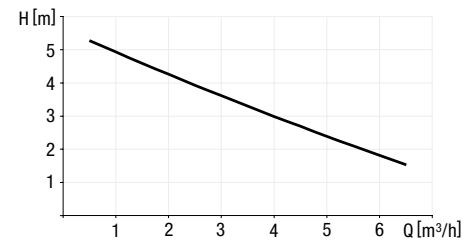


Illustration shows Art. no. 280 570S



KTP pump	Voltage	Art. no.
With recessed cover for on-site tiling		
300-S1	230 V	280 570X
300-S1 resistant	230 V	280 570XC
With black cover		
300-S1	230 V	280 570S
300-S1 resistant	230 V	280 570SC

Pumping capacity



Pump type	Power P1 / P2	Voltage	Amperage	RPM	Plug	Cable length	Pumping height	Pumping capacity
KTP 300-S1*	0.34 kW / 0.21 kW	230 V ~ 50 Hz	1.6 A	2800 min ⁻¹	Schuko	5 m	6 m	8 m ³ /h
KTP 300-S1 resistant*	0.34 kW / 0.21 kW	230 V ~ 50 Hz	1.6 A	2800 min ⁻¹	Schuko	5 m	6 m	8 m ³ /h

*Definition of S1-pumps see page 97