

Engineering systems base *Aqualift F XL Mono / Duo*

Wet installation, with macerator / cutting pumps



EN 12050-1 **Ex** ATEX version

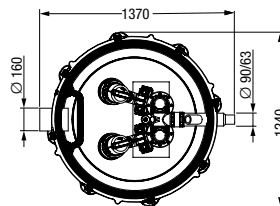
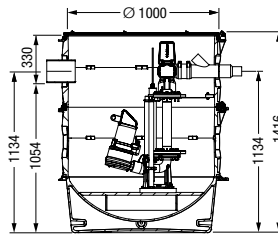
Tank volume: 680 liters
 Pump volume: max. 310 liters

Polyethylene system base for underground installation, resistant to aggressive media. With \varnothing 160 mm inlet. For connection to \varnothing 1000 mm system chamber. Handles groundwater depths up to 3.000 mm.

With **single or twin removable wastewater pump(s)** with macerator for wastewater with or without sewage. With hydrostatic sensor for level measurement. Pressure pipe \varnothing 63/90 mm outside diameter (welded PE pipe is to be used for the pressure pipe), including backflow preventer and closure valve on pressure pipe side. Power cable length: 10 m (30 m on request).

Control unit
 With control unit with self-diagnosis system (SDS), battery buffering and logbook function, control unit is splashproof (IP 54).

- **Installation:** in combination with system chambers page 156 – 157
- **Accessories:** pages 158 – 161



Mono version with one macerator pump

STZ pump	Pumping volume in liters	Voltage	Art. no.
1300-S1	310	400 V	874 30 14
2500-S1	310	400 V	874 30 15
3700-S1	310	400 V	874 30 16

Duo version with two macerator pumps

STZ pump	Pumping volume in liters	Voltage	Art. no.
1300-S1	300	400 V	874 30 17
2500-S1	300	400 V	874 30 18
3700-S1	300	400 V	874 30 19

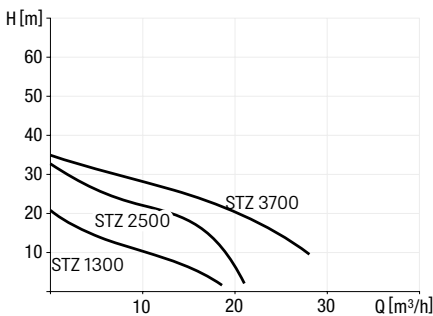
Engineering systems base *Aqualift F XL* in combination with system chamber \varnothing 1000

Access opening \varnothing 600

Access opening \varnothing 800



Pumping capacity



Pump type	Voltage	Amperage	Input Power (P1)	Power (P2)	Pumping capacity	Pumping height
STZ 1300-S1	400 V	2.5 A	1.3 kW	0.9 kW	20 m³/h	21 m
STZ 2500-S1	400 V	4.4 A	2.5 kW	1.9 kW	21 m³/h	33 m
STZ 3700-S1	400 V	6.4 A	3.7 kW	3.1 kW	28 m³/h	35 m

*Definition of S1-pumps see page 97