

Pumping station *Aqualift S Basic*

For underground installation

CE EN 12050-1

Pump volume:

20 liters (Mono) / 60 liters (Tronic / Duo)

Polyethylene storage chamber for underground installation (installation depth max. 440 mm), drilling surfaces on three sides for inlet Ø 110 / 160 mm, pipe gasket and ventilation. With polymer cover, screwed, load class 300 kg.

Float switch controlled **single or twin removable wastewater pump(s)** with multi-vane impeller for wastewater without sewage (open channel passage 30 mm). Pump is rated submersible (IP 68). Pressure pipe connection Ø 50 / 63 mm with integrated non-return flap.

Control unit

Tronic versions with Basic control unit with self-diagnosis system (SDS), battery buffering, control unit is splash proof (IP 54).

Note:

- A ventilation pipe must be provided for on site.
- Consider frost free depth of pressure pipe.
- For installations without explosion proof requirements.

➤ **Accessories:** page 158 – 161

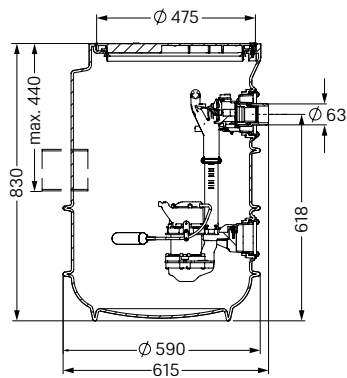


Illustration shows Mono version Art. no. 829 810

Pump type	Voltage	Amperage	Power (P1/P2)	RPM	Pumping capacity	Pumping height
GTF 600-S1*	230 V ~ 50 Hz	2.9 A	0.65 kW / 0.4 kW	2.750 min ⁻¹	12 m ³ /h	max. 8 m
GTF 1250-S1*	230 V ~ 50 Hz	5.4 A	1.3 kW / 0.8 kW	2.700 min ⁻¹	20 m ³ /h	max. 11 m

*Definition of S1-pumps see page 97



Illustration shows Mono version Art. no. 829 810



Illustration shows Duo version Art. no. 828 851



Mono version with one pump

GTF pump	Level measurement	Art. no.
Without control unit		
600-S1	float switch	829 810
1250-S1	float switch	829 850

GTF pump	Level measurement	Art. no.
With control unit		
600-S1	float switch	829 811
1250-S1	float switch	829 851

Duo version with two pumps

GTF pump	Level measurement	Art. no.
With control unit		
600-S1	float switch	828 811
1250-S1	float switch	828 851

Pumping capacity

