

Accessories

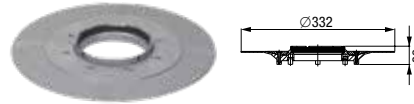
System 100

Classic, The Superflat and Floordrain ME

Glue flange

with counter flange

Compatibility: Also for compound seal; for bathroom drain *Classic*, *The Superflat* and Floordrain ME



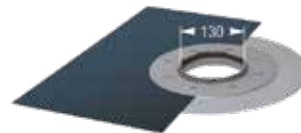
Dimensions
in mm

Art. no.

43 401

with waterproof membrane

Compatibility: For bathroom drain *Classic*, *The Superflat* and Floordrain ME
Inclusive: Pre-mounted waterproof membrane in PVC



1200 × 1200
1800 × 2000

43 401.91

43 401.93

Waterproof membrane

Waterproofing membrane

Compatibility: Art. no. 43 401



Art. no.

48 651

2 component adhesive

Compatibility: For gluing of KESSEL waterproofing membranes

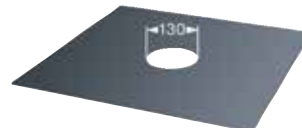


48 650

Elastomer waterproof membrane

in PVC

Compatibility: For bathroom drain *Classic*, *The Superflat* and Floordrain ME
Note: The waterproof membrane in PVC is not suitable for connections to asphalt sheeting.



Dimensions
in mm

Art. no.

500 × 500

43 710

in EPDM

Compatibility: For bathroom drain *Classic*, *The Superflat* and Floordrain ME
Note: The waterproof membrane in EPDM is not suitable for connections to asphalt sheeting.

500 × 500

43 730

Waterproof membrane

Waterproof membrane

Compatibility: For bathroom drain *Classic*, *The Superflat* and Floordrain ME
Material: PVC (without punched-out hole)

Dimensions
in mm

Art. no.

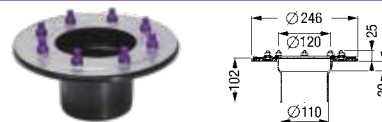
1800 × 2000

43 711

Extension section

in PP

Compatibility: For bathroom drain *Classic*, *The Superflat* and Floordrain ME
Inclusive: Pressure sealing flange in stainless steel AISI 304
Flange width: 63 mm

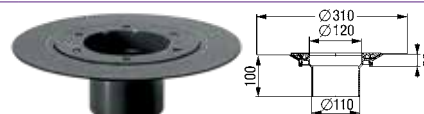


Art. no.

27 198

in ABS

Compatibility: For bathroom drain *Classic*, *The Superflat* and Floordrain ME
Inclusive: Glue flange and counter flange



27 199

in ABS

Compatibility: For bathroom drain *Classic*, *The Superflat* and Floordrain ME
Inclusive: Lip seal



27 146