

# Backwater valve *StaufixControl* and *Staufix*

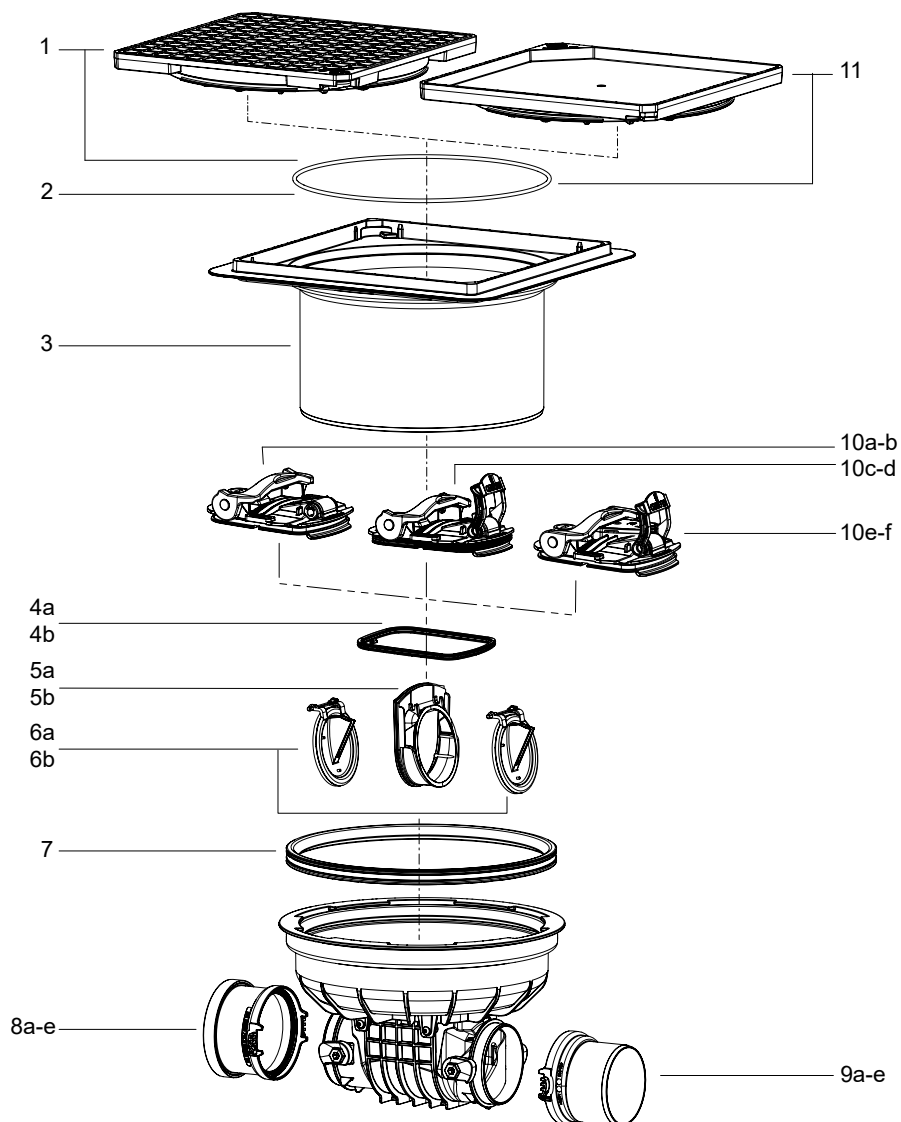
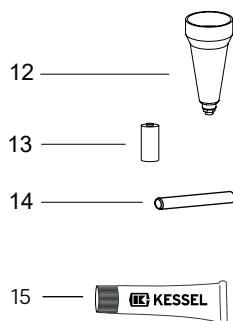
Installation in the floor slab, beginning model year 09/2017



Figure shows art. no. 770 100.10X



Figure shows art. no. 720 100.10X



Item	Designation	Art. no.	Item	Designation	Art. no.
1	Cover plate, black, surface water resistant, 366 × 366 mm, with seal	830 050	9	Spigot incl. seal	
2	Seal for cover plate	686 114	9a	Ø 90	83 090
3	Upper section, Ø 330 mm, height adjustable up to 170 mm	830 061	9b	Ø 110	830 100
4	Cover seal for <i>Staufix</i>		9c	Ø 125	83 082
4a	for Ø 90 - 110	686 112	9d	Ø 160	83 083
4b	for Ø 125 - 200	686 113	9e	Ø 200	83 084
5	Slide-in flap housing with seal		10	Lockable cover	
5a	for Ø 90 - 110	70 241	10a	<i>Staufix</i> Ø 90 - 110, without emergency closure	72 235
5b	for Ø 125 - 160	70 242	10b	<i>Staufix</i> Ø 125 - 200, without emergency closure	72 236
6	Non-return flap		10c	<i>Staufix</i> Ø 90 - 110, with emergency closure	72 229
6a	for Ø 90 - 110	70 231	10d	<i>Staufix</i> Ø 125 - 200, with emergency closure	72 230
6b	for Ø 125 - 160	70 232	10e	<i>StaufixControl</i> Ø 90 - 110, with emergency closure	72 224
7	Lip seal	686 115	10f	<i>StaufixControl</i> Ø 125 - 200, with emergency closure	72 225
8	Socket incl. seal		11	Cover plate, tileable, surface water resistant with seal	830 052
8a	Ø 90	83 091	12	Test funnel with seal	70 214
8b	Ø 110	830 101	13	Battery, 3 V for <i>Control</i> device	680 665
8c	Ø 125	83 086	14	Test hose for <i>Control</i> device, 10 cm	680 668
8d	Ø 160	83 087	15	High-performance grease for backwater valves, 12 g	681 001
8e	Ø 200	83 088			