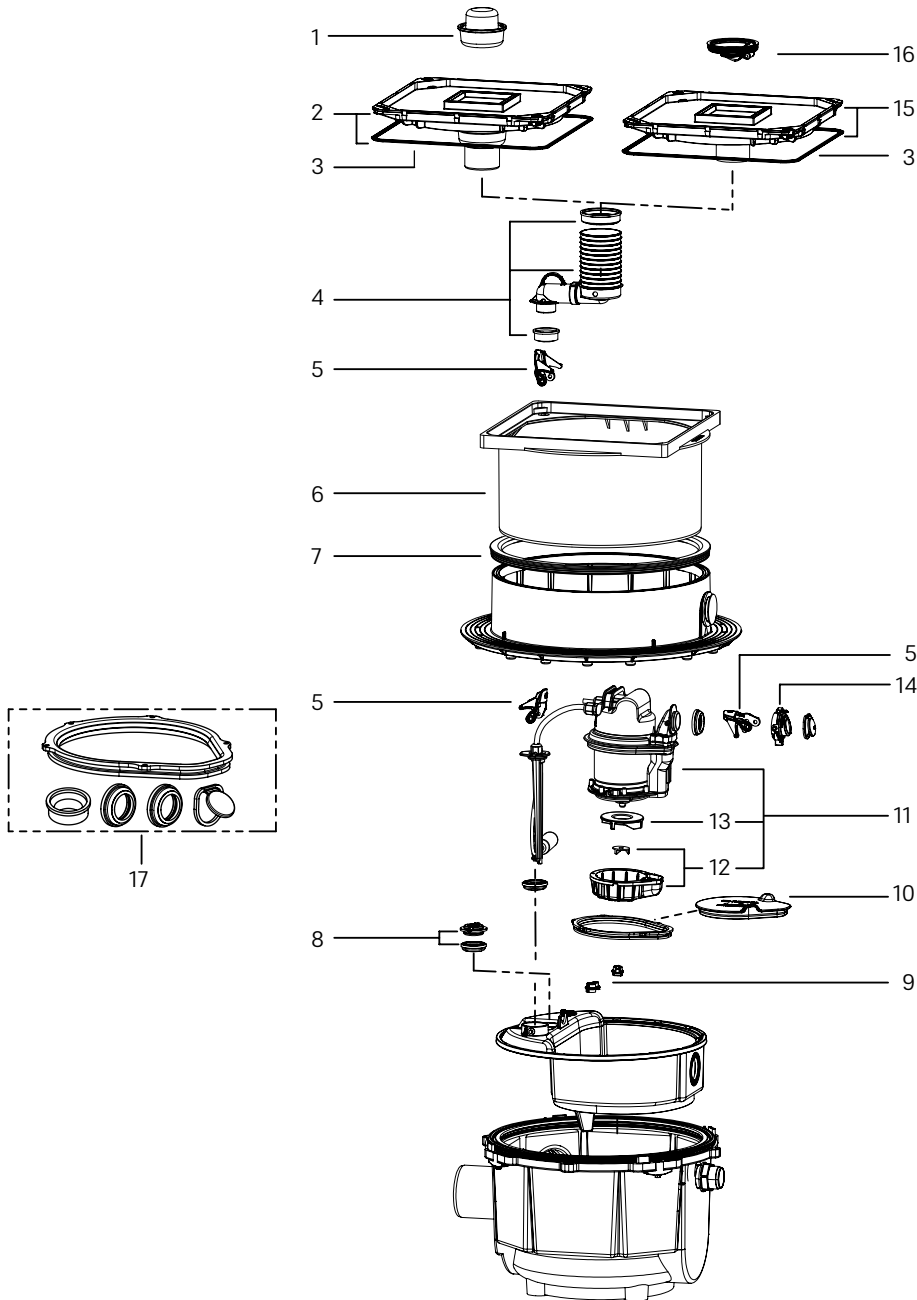


Wastewater station, *Aqualift F Mono* Underground

Installation in the floor slab, up to model year 03/2012



Item	Designation	Art. no.	Item	Designation	Art. no.
1	Odour trap, sealing water height 50 mm	47 200	9	Turn fastener for pump (1 ea.)	680 070
2	Cover plate, stone grey, tileable with drain and seal, beginning model year 01/2011	83 055	10	Cover for pump opening	28 732
3	Seal for cover plate 384 × 384 mm	680 025	11	Replacement pump KTP/SPZ 1000, 230 V, with float switch and bracket	28 301
4	Connector, drain Ø 75, with seal and rubber seal	680 075	12	Replacement blade set for KTP/SPZ 1000, with screws	28 075
5	One-handed closure for backflow preventer	680 018	13	Impeller KTP/SPZ 1000, without intake cover	680 035
6	Upper section, vertically adjustable up to 180 mm	83 061	14	Pump connection suitable for pumping stations	680 065
7	Profiled lip seal for upper section	680 026	15	Cover plate, stone grey, tileable, with drain, seal and <i>Multistop</i>	83 045
8	Cover with seal	680 076	16	Odour trap, <i>Multistop</i> with integrated seal	43 500
			17	Mono seal set	28 737