

INSTALLATION AND OPERATING INSTRUCTIONS

KESSEL KTP 500 Submersible Pump with lateral and vertical outlet connection Order Numbers 28710, 28810, 28850



Product advantages

- Automatic float switch – as water level increases, float switch automatically activates
- 1 ¼ inch vertical outlet connection
- Connection flange for lateral connection
- Pumping heights up to 8 meters
- Operation in DN 200 pipe possible

The installation and service of this unit should be carried out by a licensed professional servicer

Company - Telephone No.

Edition 05/2000-HG

ID number 010-603

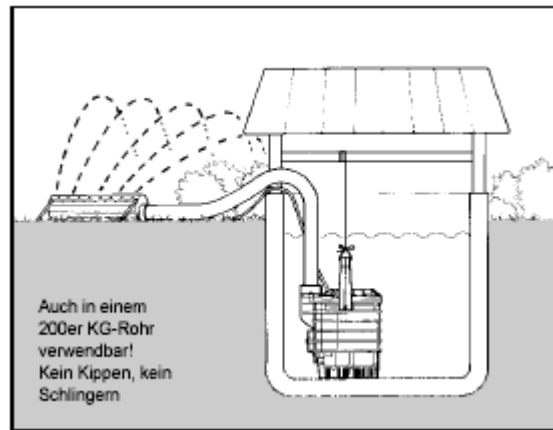
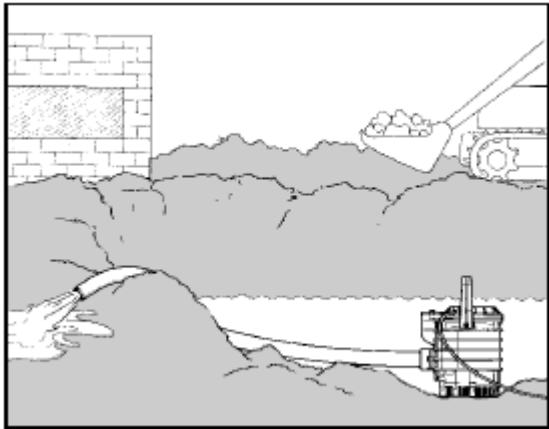
(Subject to technical amendments)

Table of Contents

1. Areas of Installation	page 3
2. Connection possibilities	page 5
3. Cleaning and Maintenance	page 6
4. Performance Curve	page 7
5. Technical Data	page 8
6. Problems and Solutions	page 9
7. Replacement Parts	page 10
8. Guarantee	page 11

1. Areas of Installation

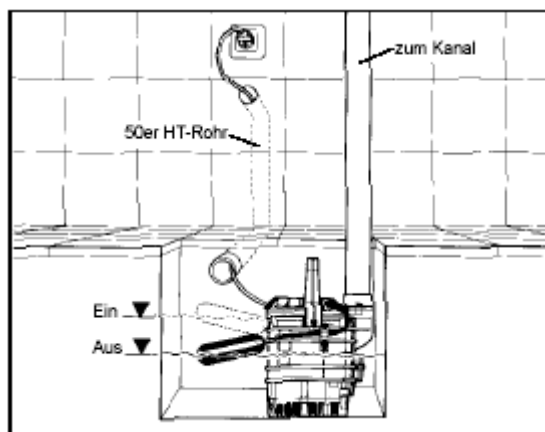
The KESSEL KTP 500 submersible pump is primarily designed for non-stationary applications. It is an excellent means for the removal of water for nearly any type of situation (ie. garden watering, filling draining swimming pools, pumping out flooded basements and dewatering of construction sites). The unique design (vertical or horizontal output) allows the pump to fit into many tight / narrow installations where most pumps could not be installed. The KTP 500 will not oscillate or tilt back and forth when in operation.



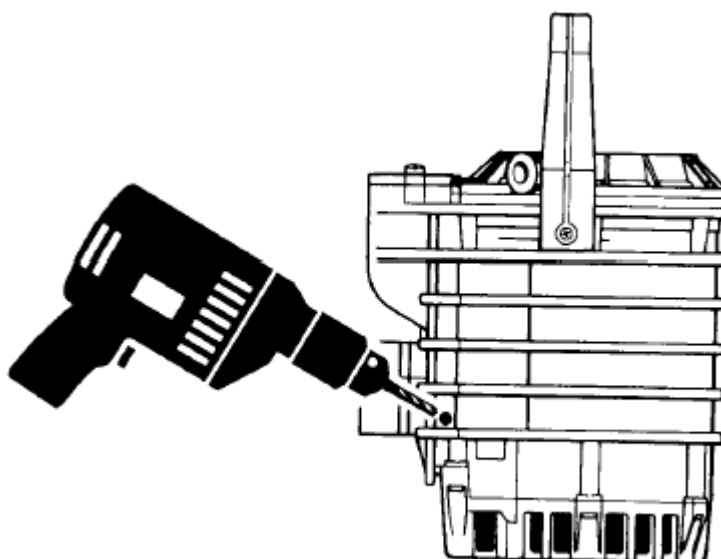
Also fits firmly in a DN 200 pipe.

1. Areas of Installation

The KESSEL KTP 500 submersible pump is perfect for installation in basements where flooding is a constant occurrence. As pictured, the pump can be placed in a sump and will pump only when a specific height of water has filled the sump and activated the float switch. If the pump is required elsewhere, it can simply be removed from the sump and re-installed when finished.



Ein/Aus = On/Off
zum Kanal = to sewage pipe
50er HT-Rohr = DN 50 pipe



NOTE: When the KTP 500 is being used as a stationary unit (permanently installed), a ventilation hole should be drilled into the outer housing of the pump. The proper location and size (6 mm diameter hole) of this hole is marked by a preformed recess on the outside of the pump. Take caution when drilling this ventilation hole to only drill through the polymer housing and not deeper.

2. Connection possibilities

1. Screw in the adaptor for quick-release couplings. Use 1 ¼ inch.

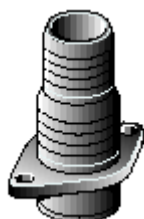


Vertical connection



Horizontal connection

2. Remove quick release threaded adaptor and insert adaptor for 1 ½ and 1 ¼ inch hoses. Tighten with screws.



Vertical connection



Horizontal connection

3. Cleaning and Maintenance

WARNING!! Before any work is conducted on the pump, DISCONNECT THE PUMP FROM THE POWERSUPPLY.

Regular inspection and maintenance will insure that the KTP 500 submersible pump will operate reliably and at its maximum performance.

To clean, unscrew the screws located at the bottom of the pump which hold on the strainer basket. Remove the strainer basket by depressing the snap-lock fasteners. Remove the intake cover by inserting a screwdriver into the center hole and carefully prying off the cover. Rinse the impeller and the removed strainer basket and intake cover with fresh water making sure that all parts are clean. Do not remove any other parts of the pump (this should only be handled by authorized specialists). If your pump is equipped with a float switch, clean it and make sure it is free of any type of debris.

Do not use the KESSEL KTP 500 for pumping wastewater container raw sewage or for pumping flammable or explosive liquids.

KESSEL KTP 500 TITANIUM PUMP – This version is suitable for pumping mechanically or chemically contaminated media. **Please not that the KESSEL KTP 500 TITANIUM (as well as the standard KTP 500) should not be used for pumping nitroethylene or trichloroethylene.**

WARNING !! – The use of pumps in swimming pools, ponds or any location where people or animals could be present is only allowed if the pump has been constructed in accordance with VDE 0100 Section 49 d. In case of any doubt, consult your local electrical installation specialist.

The KESSEL KTP 500 submersible pump contains oil for lubrication and cooling purposes. If the pump is damaged, the oil could escape and contaminate the medium in which the pump is operating.

Before the KESSEL KTP 500 submersible pump is put into service make sure that the following electrical safety protection measures have been met :

- That the outlet or power connection to which the pump's plug is attached is grounded.
- That the outlet or power connection to which the pump's plug is attached is connected to a circuit breaker.

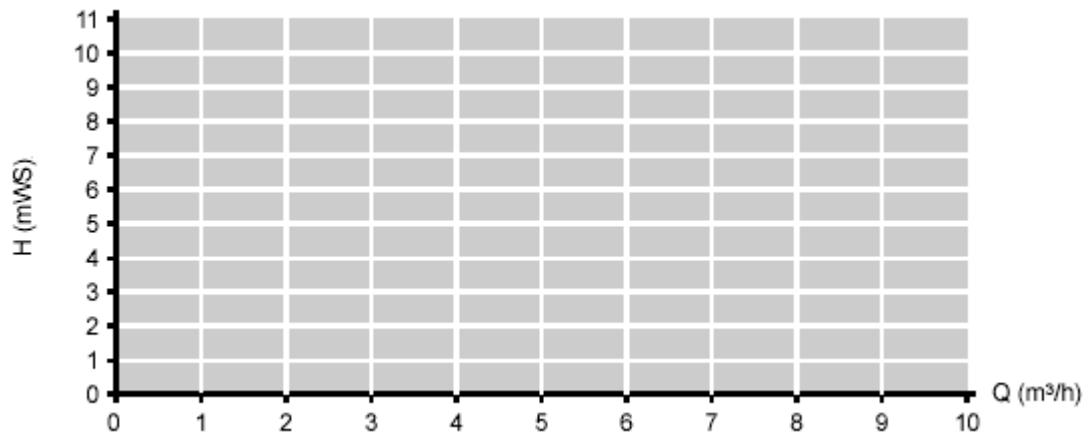
The plug of the KESSEL KTP 500 submersible pump must be protected from moisture. In all situations (especially when the pump is being used as a sump pump) it is mandatory that the plug is safe from flooding or any type of water hazard.

4. Performance Curve

Performance data:

Discharge quantity Q (m ³ /h)	0,0	1,1	2,2	3,3	4,3	5,2	6,1	6,9	7,7	8,0
Discharge head H (mWS)	8,0	7,9	7,0	6,0	5,0	4,0	3,0	2,0	1,0	0,0

Performance curve for KESSEL KTP 500 submersible pump with $\frac{3}{4}$ to 1 $\frac{1}{2}$ inch hose connection



5. Technical data

Technical data:

Power*	Revolutions	Current	Voltage	Amperage	Fuse	Cable length	Plug	Motor protection
480 W	2800 rev/min	50Hz AC	230 V	2,1 A	6 Amp	3m, 5m, 10m**	2 polar plug	Internal (thermal)

*) Effective power drawn from main power supply

**) Use outdoors with 10 m cable

Dimensions (pump):

Weight	Height	Max diameter
6.7 kg	260 mm with handle	185 mm without float switch

KESSEL Advantages:

- Absolutely corrosion free
- Universal submersible pump for all wells / sumps
- Max diving depth: 10 m
- Constant running at 25 deg Celsius wastewater temp (90 deg Celsius – 5 minutes run time)

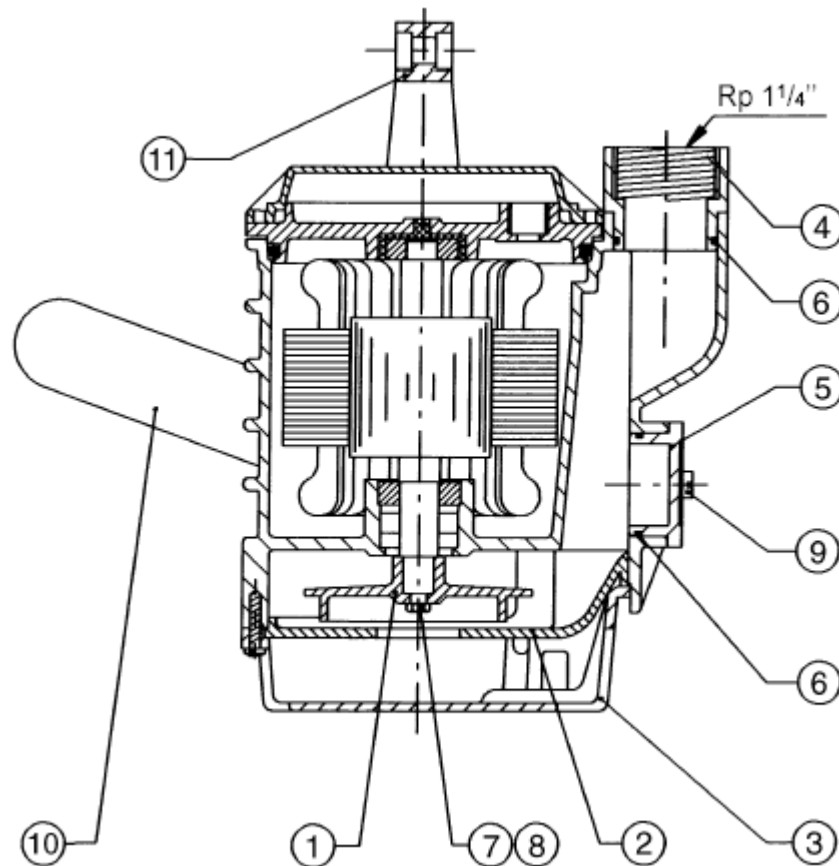
ÖVE information:

According to ÖVE 2022.1, pumps for use in swimming areas or gardens must be hard wired and be powered from separate transformer. The secondary voltage must not be exceeded.

6. Problems and Solutions

Problem	Reason	Solution
Pump does not run	<ul style="list-style-type: none"> • Pump not receiving power • Fuse defective / blown • Power chord damaged • Float switch damaged 	<p>Check power and connection</p> <p>Check / replace fuse</p> <p>Repair only by KESSEL service</p> <p>Replace cover and float switch or repair by KESSEL service</p>
Impeller blocked	Obstruction (wood, stone, sand, plastic,...) blocking impeller rotation	Clean pump and impeller (see Chapter 3)
Low pump performance	<ul style="list-style-type: none"> • Low intake filter blocked / clogged • Worn / damaged intake flange • Worn / damaged impeller 	<p>Clean pump / filter</p> <p>Replace intake flange</p> <p>Replace impeller</p>

7. Replacement Parts



Pos.	Part	Order Number	Quantity
1	Impeller	28014	1
2	Intake flange	28015	1
3	Intake filter	28016	1
4	Threaded outlet	28017	1
5	Outlet flange	28018	1
6	O-ring	28019	2
7	Impeller attachment bolt M6 x 12	28020	1
8	Washer	28021	1
9	Screw M6 x 12	28022	4
10	Float switch - complete	28012a	1
11	Grip 7 handle	28024	1

8. Guarantee

1. In the case that a KESSEL product is defective, KESSEL has the option of repairing or replacing the product. If the product remains defective after the second attempt to repair or replace the product or it is economically unfeasible to repair or replace the product, the customer has the right to cancel the order / contract or reduce payment accordingly. KESSEL must be notified immediately in writing of defects in a product. In the case that the defect is not visible or difficult to detect, KESSEL must be notified immediately in writing of the defect as soon as it is discovered. If the product is repaired or replaced, the newly repaired or replaced product shall receive a new warranty identical to that which the original (defective) product was granted. The term defective product refers only to the product or part needing repair or replacement and not necessarily to the entire product or unit. KESSEL products are warranted for a period of 24 months. This warranty period begins on the day the product is shipped from KESSEL to its customer. The warranty only applies to newly manufactured products. Additional information can be found in section 377 and 378 of the HGB.

2. Wear and tear on a product will not be considered a defect. Problems with products resulting from improper installation, handling or maintenance will also not be considered a defect.

01.01.2002

Everything for drainage



- Backwater valves and cleanouts
- Polymer and cast iron drains
- Volatile liquid traps
- Lifting stations, pumps, warning and control units
- Rainwater management systems
- Grease separators
- Oil/fuel and coalescence separators
- Inspection chambers
- Custom projects for industrial applications