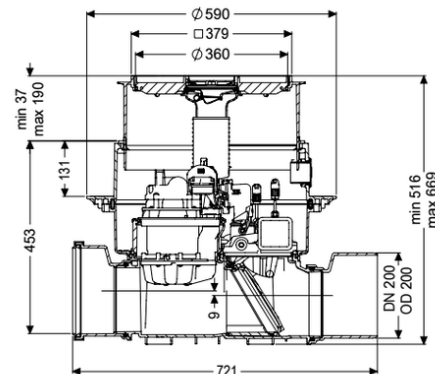
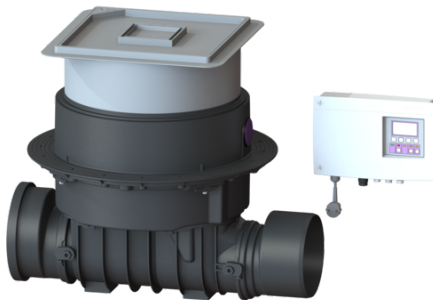


## Backwater pump station, Pumpfix F DN 200, Floor slab, tileable



### Article information

Item no.: 24200X  
 GTIN: 4026092046593  
 Price group: 30

### Advantages

- Backwater pumping station: uses the natural fall to the sewer - pump is only used for backwater
- Flexible installation, different covers with drain function available for installation in the floor slab
- Quiet and energy-saving

### Description

The premium backwater pumping station for faecal and non-faecal wastewater is equipped with a pump and a motor-driven closure system. The pipe cross-section is normally open. In case of backwater, the motor-driven closure system is closed automatically. During the backwater phase, the water drains via the pump with integrated macerator. The station is controlled by a user-friendly control unit, which is optionally integrated in the building management system via a potential-free contact, or alarm and collective fault messages can be output via a GSM interface.

#### Variant

|                               |                |
|-------------------------------|----------------|
| Emergency closure:            | yes            |
| Rim width:                    | Control unit   |
| Protection class, probe:      | IP 68 (3m/48h) |
| Motor-driven backwater flaps: | 1              |

#### General characteristics

|                       |                                 |
|-----------------------|---------------------------------|
| Colour:               | black                           |
| Nominal size (DN):    | 200                             |
| Outer diameter (OD):  | 200 mm                          |
| Note on nominal size: | Hydraulics correspond to DN 150 |
| Type of wastewater:   | with sewage                     |

|  |  |
|--|--|
| Installation situation:                                | floor slab installation  |
| Delivery state:  | Pre-mounted for final assembly on site (pumps and sensor system must be fitted on site and control unit must be connected) |
| Inlet max. scoring (DN):                               | Z-53.2-388   |
| Motor type:  | KSM 140  |
| Protection class (pump):                               | IP 68 (3m/48h)   |
| Dimensions   |  |
| Net weight:  | 28 kg  |
| Gross weight:  | 33,5 kg  |
| Groundwater resistant from lower edge of base section: | 3000 mm  |
| Cutout dimension, width:                               | 750 mm   |
| Cutout dimension, length:                              | 750 mm   |
| Vertical drop between inlet and outlet:                | 9 mm   |
| Installation depth:                                    | 516 - 669 mm   |
| Vertical adjustment:                                   | vertically adjustable upper section  |
| Length:  | 720 mm   |
| Width:   | 590 mm   |
| Packaging dimension:                                   | length   |
| Packaging dimension:                                   | width  |
| Packaging dimension:                                   | height   |
| Tank/drain body  |  |
| System:  | including spigot and socket  |
| Coverage features                                      |  |
| Type of cover:   | tileable cover plate   |
| Cover material:  | Polymer  |
| Width of cover:  | 366 mm   |
| Length of cover:                                       | 366 mm   |
| Drainage function:                                     | yes  |
| Cover locking:   | Lock & Lift  |
| Load class:  | K 3 (EN 1253-1)  |
| Max. flooring height:                                  | 16 mm  |
| Odour trap:  | Multistop  |
| Pumping device   |  |
| Pump control:  | SPZ 1000   |
| Number of pumps:                                       | 1  |
| Weight:  | 10 kg  |
| Connection type:                                       | coded plug   |
| Rated current:   | 5,2 A  |
| Length of mains cable for pump:                        | 5 m  |
| Self-diagnosis system (SDS):                           | I  |
| Insulation class:                                      | F  |
| Cos phi - power factor:                                | 0,97   |
| Protection class control unit:                         | IP 68 (3m/48h)   |
| DSC:   | integrated   |

|  |                                       |
|--|---------------------------------------|
| Max. temperature (permanent) of conveyed material: | 40 °C                                 |
| Max. pumping capacity:                             | 11,5 m³/h                             |
| Max. pumping height:                               | 10 m                                  |
| Speed:   | 2800 U/min                            |
| Power P1:  | 1,2 kW                                |
| Power P2:  | 0,69 kW                               |
| Operating mode:                                    | S3 - 50 %                             |
| Type of fuse required (electrical protection):     | C 16 A                                |
| Type of pump connection cable:                     | H07RN-F 3G 1.5 mm²                    |
| Impeller type:                                     | Macerator                             |
| Motor connection cable type:                       | ÖPVC-JB/OB 300/500 V/3 x 0,75 mm² mm² |
| Sensor connection cable type:                      | ÖPVC-JB/OB 300/500 V/3 x 0,75 mm² mm² |
| Control  |                                       |
| Control unit:                                      | Comfort                               |
| Alarm sensor:                                      | optical probe                         |
| Level measurement instrument:                      | optical probe                         |
| Type of level measurement:                         | optical                               |
| Protection class probe:                            | IP 54                                 |
| Operating voltage:                                 | 230 V                                 |
| Connection type:                                   | coded plug                            |
| Length of mains cable for control unit:            | 1,4 m                                 |
| Potential-free contact:                            | optional                              |
| GSM interface:                                     | yes                                   |
| USB interface:                                     | yes                                   |
| Log book function:                                 | yes                                   |
| Multi-line display:                                | yes                                   |
| Battery buffering:                                 | yes                                   |
| Self-diagnosis system (SDS):                       | yes                                   |
| Rated current:                                     | 5,2 A                                 |