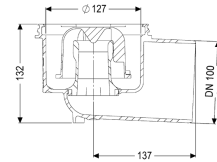


## Practicus drain body DN 100, Horizontal outlet



### Article information

Item no.: 45110  
 GTIN: 4026092033562  
 Price group: 10

### Advantages

- Hygiene: hygienic, absolutely corrosion-free and durable material
- absolutely corrosion-free and durable material

### Description

In combination with an upper section, the Practicus polymer drain body is used for point drainage and is equipped with a removable odour trap and a temporary protective cover. The drain meets particular sound insulation requirements in accordance with the measurements of the Fraunhofer Institute in Stuttgart.

#### Variant

|   |                   |
|---|-------------------|
| System:                                   | 125               |
| Waterproofing layer on the upper section: | Connection flange |
| Waterproofing layer on the drain body:    | Connection flange |
| Sealing water height:                     | 50 mm             |

#### General characteristics

|                      |                                      |
|----------------------|--------------------------------------|
| Nominal size (DN):   | 100                                  |
| Outer diameter (OD): | 110 mm                               |
| Odour trap:          | included                             |
| Sustainable:         | through the use of recycled material |

#### Dimensions

|                      |         |
|----------------------|---------|
| Net weight:          | 0,73 kg |
| Gross weight:        | 0,83 kg |
| Diameter:            | 135 mm  |
| Height:              | 132 mm  |
| Packaging dimension: | length  |
| Packaging dimension: | width   |
| Packaging dimension: | height  |

|                                  |  |
|----------------------------------|--|
| Tank/drain body                  |  |
| Number of outlets:               | 1  |
| Connection inlet/outlet sockets: | The outlet spigot is suitable for connection to SML pipes. |
| Material of drain body:          | PP   |
| Socket version:                  | lateral  |