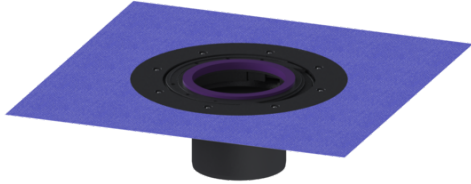


## Extension section H: 120 mm, with glued flange



### Article information

Item no.: 48900  
GTIN: 4026092034620  
Price group: 10

### Description

Extension section with glued flange for alternative seals, side adjustable for adapting to the tiling pattern, including temporary protective cover

#### Variant

Seal:	Lip seal
-------	----------

#### General characteristics

Colour:	grey
Material:	ABS

#### Dimensions

Net weight:	1,09 kg
Gross weight:	1,36 kg
Diameter:	312 mm
Clear width (LW):	125 mm
Packaging dimension:	length
Packaging dimension:	width
Packaging dimension:	height