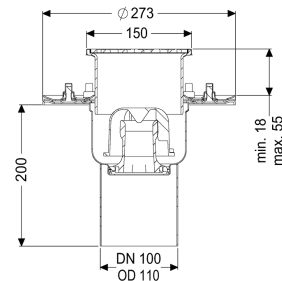
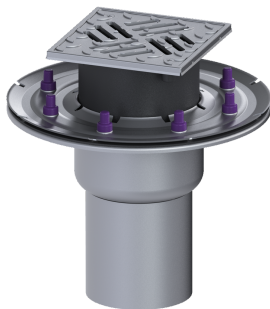


## Ferrofix floor drain press, fl. DN 100, vertical, Slotted grating



### Article information

Item no.: 54230.61  
 GTIN: 4026092053560  
 Price group: 70

### Advantages

- Made of particularly hygienic and mechanically highly resistant stainless steel
- High flow rate

### Description

The Ferrofix stainless steel floor drain is used for point drainage and is equipped with a pressure sealing flange as well as a removable odour trap made of stainless steel, a lip seal and a temporary protective cover. The pressure sealing flange with bolts and screws made of stainless steel is used for the clamping or welding of bitumen and polymer bitumen sheets as well as for polymer and elastomer sealing sheets. Only membranes tested by the manufacturer may be used for watertight seals. The outlet socket is suitable for connection to SML cast iron pipes. With connection option for equipotential bonding.

Variant

System:	125
Waterproofing layer on the upper section:	Connection flange
Waterproofing layer on the drain body:	Press sealing flange (suitable for creating watertight seals)
Sealing water height:	50 mm

General characteristics

Standard:	EN 1253-1
Nominal size (DN):	100
Outer diameter (OD):	110 mm
Approval:	Z-19.53-2414,Z-19.53-2414_V,Z-19.17-1719,Z-19.17-1719_V
Odour trap:	included

Dimensions

Net weight:	3,67 kg
Gross weight:	4,3 kg
Type of height adjustability:	vertically adjustable upper section
Length:	273 mm
Width:	273 mm
Packaging dimension:	length
Packaging dimension:	width
Packaging dimension:	height
Tank/drain body	
Number of outlets:	1
Material of drain body:	Stainless steel 14301
Socket version:	vertical
Coverage features	
Type of cover:	Slotted cover
Cover material:	Stainless steel 14301
Width of cover:	138 mm
Length of cover:	138 mm
Surface:	Polished SST
Locking:	screwed
Load class:	L 15 (EN 1253-1)
Slip resistance class:	R11 according to DIN 51130; C according to DIN 51097
Rim width:	150 mm
Rim length:	150 mm
Upper section:	vertically adjustable
Shape of upper section:	square
Upper section material:	ABS