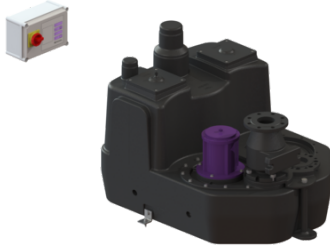


## Aqualift F XL, 200 L lift. stat. Mono, SPF 4500-S3



### Article information

Item no.: 11059  
GTIN: 4026092057261  
Price group: 50

### Advantages

- Different performance classes available
- Pressure sensor for reliable pneumatic level measurement
- Maximum operating reliability due to intelligent control unit (Duo)

### Description

The lifting station for faecal and faecal-free wastewater is equipped with one or two submersible pumps and a backflow preventer. The collection tank made of permanently resistant polymer (PE) offers universal connection options and has a screwed access cover.

#### Variant

Type of system:	Single unit
Shut-off valve:	without shut-off valve
Backwater protection:	integrated
Pressure pipe connection:	vertical

#### General characteristics

Colour:	black
Standard:	EN 12050-1
Type of wastewater:	with sewage
Installation situation:	free-standing installation
System type:	Mono

#### Dimensions

Net weight:	106,39 kg
Gross weight:	126,39 kg
Packaging dimension:	width
Packaging dimension:	height
Packaging dimension:	length

#### Tank/drain body

Tank volume:	200 l
--------------	-------

#### Pumping device

Pump control:	SPF 4500
Number of pumps:	1
Length of mains cable for pump:	5 m
Operating mode:	S3 - 50 %
Impeller type:	Multi-vane impeller
Free passage:	40 mm

Control	
Level measurement instrument:	Immersion pipe
Type of level measurement:	pneumatic
Mains frequency:	50 Hz
Operating voltage:	400 V
Max. permissible switching frequency:	Comfort