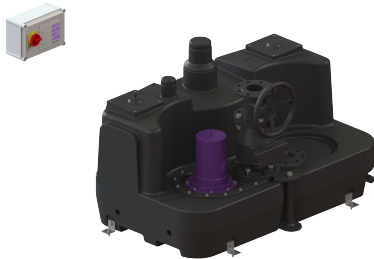


Lifting station Aqualift XL 300l Mono, SPF 5600, Cast-iron shut-off val



Article information

Item no.: 11079
 GTIN: 4026092057469
 Price group: 50

Advantages

- Different performance classes available
- Pressure sensor for reliable pneumatic level measurement
- Maximum operating reliability due to intelligent control unit (Duo)

Description

The lifting station for faecal and faecal-free wastewater is equipped with one or two submersible pumps and a backflow preventer. The collection tank made of permanently resistant polymer (PE) offers universal connection options and has a screwed access cover.

Variant

| | |
|---------------------------|----------------------------------|
| Type of system: | Single unit |
| Shut-off valve: | Shut-off valve made of cast iron |
| Pressure pipe connection: | vertical |

General characteristics

| | |
|-------------------------|----------------------------|
| Colour: | black |
| Standard: | EN 12050-1 |
| Type of wastewater: | with sewage |
| Installation situation: | free-standing installation |
| System type: | Mono |

Dimensions

| | |
|----------------------|-----------|
| Net weight: | 142,96 kg |
| Gross weight: | 162,96 kg |
| Packaging dimension: | length |
| Packaging dimension: | width |
| Packaging dimension: | height |

Tank/drain body

| | |
|--------------|----------|
| Tank volume: | 300,00 l |
|--------------|----------|

Pumping device

| | |
|--|-------------------------------|
| Pump: | SPF 5600 |
| Number of pumps: | 1 |
| Weight, pump: | 38 kg |
| Connection type: | Direct connection |
| Operating voltage: | 400 V |
| Mains frequency: | 50 Hz |
| Protection class: | I |
| Insulation class: | F |
| Protection class (pump): | IP 68 (3m/48h) |
| Temperature monitoring: | integrated |
| Max. temperature (permanent) of conveyed material: | 40 °C |
| Max. pumping capacity: | 60 m ³ /h |
| Max. pumping height: | 28 m |
| Speed: | 2800 U/min |
| Power P1: | 5,7 kW |
| Power P2: | 4,8 kW |
| Operating mode: | S3 - 30 % |
| Type of pump connection cable: | H07RN8-F 6G 1 mm ² |
| Impeller type: | Multi-vane impeller |
| Free passage: | 40 mm |
| Length of mains cable for pump: | 5 m |
| Rated current: | 9,1 A |
| | |
| Control | |
| Control unit: | Comfort |
| Motor protection switch: | yes |
| Alarm sensor: | Immersion pipe |
| Level measurement instrument: | Immersion pipe |
| Type of level measurement: | pneumatic |
| Protection class control unit: | IP 54 |
| Mains frequency: | 50 Hz |
| Operating voltage: | 400 V |
| Connection type: | Direct connection |
| Potential-free contact: | yes |
| GSM interface: | yes |
| Log book function: | yes |
| Multi-line display: | yes |
| Battery buffering: | yes |
| Self-diagnosis system (SDS): | yes |