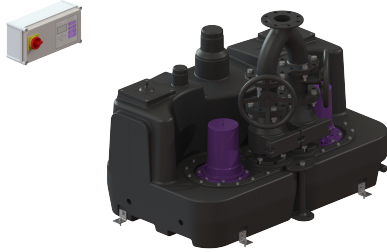


Lifting station Aqualift XL 300l Duo, SPF 5600, 2 shut-off valve



Article information

Item no.: 11081
 GTIN: 4026092057483
 Price group: 50

Advantages

- Different performance classes available
- Pressure sensor for reliable pneumatic level measurement
- Maximum operating reliability due to intelligent control unit (Duo)

Description

The lifting station for faecal and faecal-free wastewater is equipped with one or two submersible pumps and a backflow preventer. The collection tank made of permanently resistant polymer (PE) offers universal connection options and has a screwed access cover.

Variant

Type of system:	duo pump
Shut-off valve:	2 shut-off valves made of cast iron
Pressure pipe connection:	vertical

General characteristics

Colour:	black
Standard:	EN 12050-1
Type of wastewater:	with sewage
Installation situation:	free-standing installation
System type:	Duo

Dimensions

Net weight:	236,64 kg
Gross weight:	256,64 kg
Packaging dimension:	length
Packaging dimension:	width
Packaging dimension:	height

Tank/drain body

Tank volume:	300,00 l
--------------	----------

Pumping device

Pump:	SPF 5600
-------	----------

Number of pumps:	2
Weight, pump:	38 kg
Connection type:	Direct connection
Operating voltage:	400 V
Mains frequency:	50 Hz
Protection class:	I
Insulation class:	F
Protection class (pump):	IP 68 (3m/48h)
Temperature monitoring:	integrated
Max. temperature (permanent) of conveyed material:	40 °C
Max. pumping capacity:	60 m ³ /h
Max. pumping height:	28 m
Speed:	2800 U/min
Power P1:	5,7 kW
Power P2:	4,8 kW
Operating mode:	S3 - 30 %
Type of pump connection cable:	H07RN8-F 6G 1 mm ²
Impeller type:	Multi-vane impeller
Free passage:	40 mm
Length of mains cable for pump:	5 m
Rated current:	9,1 A
Control	
Control unit:	Comfort
Motor protection switch:	yes
Alarm sensor:	Immersion pipe
Level measurement instrument:	Immersion pipe
Type of level measurement:	pneumatic
Protection class control unit:	IP 54
Mains frequency:	50 Hz
Operating voltage:	400 V
Connection type:	Direct connection
Potential-free contact:	yes
GSM interface:	yes
Log book function:	yes
Multi-line display:	yes
Battery buffering:	yes
Self-diagnosis system (SDS):	yes