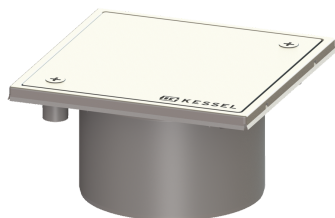


## Cleanout Sys 100, ABS, Cover 304 SST, screw, L15



### Article information

Item no.: 27196G  
 GTIN: 4026092054963  
 Price group: 70

### Description

The cleanout, made of polymer with grating and frame made of stainless steel, serves as an upper section for direct connection on pipes and is equipped with a closed, screwed cover plate.

Variant

System: 100

Dimensions

Net weight: 0,72 kg

Gross weight: 0,79 kg

Height: 93 mm

Packaging dimension: length

Packaging dimension: width

Packaging dimension: height

Coverage features

Type of cover: closed cover plate

Cover material: Stainless steel 14301

Colour of cover: silver

Height of cover: 17 mm

Surface: Polished SST

Frame material: Stainless steel 14301

Locking: screwed

Load class: L 15 (EN 1253-1)

Rim width: 150 mm

Rim length: 150 mm

Shape of upper section: square

Upper section material: ABS