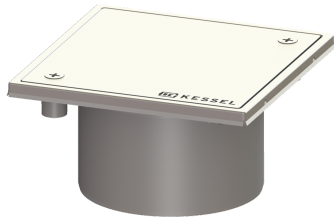


## Cleanout Sys 100, ABS, Cover 304 SST, screw, L15



### Article information

Item no.: 27196G  
 GTIN: 4026092054963  
 Price group: 70

### Description

The cleanout, made of polymer with grating and frame made of stainless steel, serves as an upper section for direct connection on pipes and is equipped with a closed, screwed cover plate.

#### Variant

System: 100

#### Dimensions

Net weight: 0,72 kg  
 Gross weight: 0,79 kg  
 Height: 93 mm  
 Packaging dimension: length  
 Packaging dimension: width  
 Packaging dimension: height

#### Coverage features

Type of cover: closed cover plate  
 Cover material: Stainless steel 14301  
 Colour of cover: silver  
 Height of cover: 17 mm  
 Surface: Polished SST  
 Frame material: Stainless steel 14301  
 Locking: screwed  
 Load class: L 15 (EN 1253-1)  
 Rim width: 150 mm  
 Rim length: 150 mm  
 Shape of upper section: square  
 Upper section material: ABS