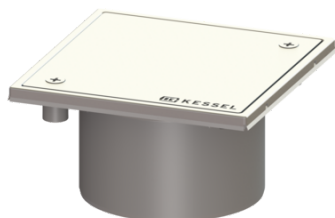


Cleanout Sys 100, ABS, Cover 304 SST, screw, L15



Article information

Item no.: 27196G
 GTIN: 4026092054963
 Price group: 70

Description

The cleanout, made of polymer with grating and frame made of stainless steel, serves as an upper section for direct connection on pipes and is equipped with a closed, screwed cover plate.

Variant

System: 100

Dimensions

Net weight: 0,72 kg
 Gross weight: 0,79 kg
 Height: 93 mm
 Packaging dimension: width
 Packaging dimension: height
 Packaging dimension: length

Coverage features

Type of cover: closed cover plate
 Cover material: Stainless steel 14301
 Colour of cover: silver
 Height of cover: 17 mm
 Surface: Polished SST
 Frame material: Stainless steel 14301
 Cover locking: screwed
 Load class: L 15 (EN 1253-1)
 Rim length: 150 mm
 Rim material: 150 mm
 Shape of upper section: square
 Upper section material: ABS