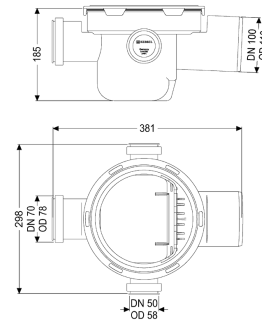
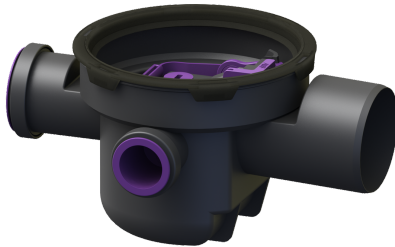


## Drain body The Universal DN 100, 3 inlets, w. backwater valve



### Article information

Item no.: 27600  
GTIN: 4026092085141  
Price group: 10

### Advantages

- Flexible installation: vertically adjustable upper section rotatable
- Integrated backwater protection
- vertically adjustable

### Description

The polymer drain body is equipped with a removable backwater valve with two backwater flaps, one hand-lockable emergency closure and a sludge bucket. The drain body also has two inlets DN 50 and one inlet DN 70 with blind plug. Material:

PP

#### Variant

Sealing water height: 60 mm  
Mechanical backwater flaps: 2

#### General characteristics

Colour: black  
Standard: EN 1253-1  
Nominal size (DN): 100  
Outer diameter (OD): 110 mm  
Type of wastewater: without sewage  
Installation situation: floor slab installation  
Backwater protection: Type 5  
Odour trap: included  
Sustainable: through the use of recycled material

#### Dimensions

Net weight: 2,31 kg

Gross weight:	2,31 kg
Length:	380 mm
Width:	285 mm
Height:	190 mm
Packaging dimension:	length
Packaging dimension:	width
Packaging dimension:	height
Tank/drain body	
Material of drain body:	PP
Socket version:	lateral