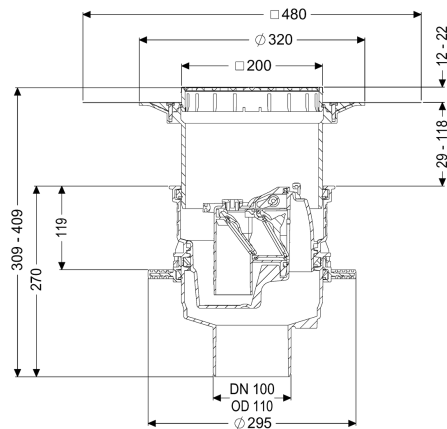
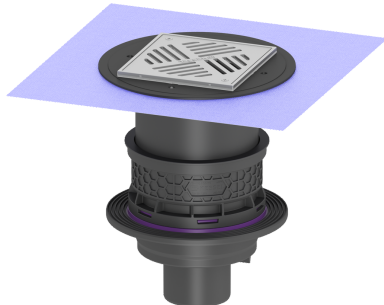


Universal Plus basement drain ver., Variofix, Backw. valve, Waterpr. concr.



Article information

Item no.: 27651
GTIN: 4026092096888
Price group: 10

Advantages

- Sustainable due to use of recycled material
- Inlets above the floor slab, no penetration required
- Vertical outlet for easy installation and easy access to the main drainage pipe

Description

The polymer Universal Plus basement drain is used for drainage of non-faecal wastewater and is equipped with a removable backwater valve with two backwater flaps and a one hand-lockable emergency closure. Including temporary protective cover. The drain is pressure-waterproof up to 0.6 bar (MFPA Leipzig tested) and radon-tight (IAF Radioökologie GmbH tested).

Variant

| | |
|--|---|
| Emergency closure: | yes |
| Waterproof flange: | Pre-assembled at the factory |
| Waterproofing layer on the upper section: | Enclosed sealing collar to be glued (bd) according to DIN 18534 |
| Water exposure class in accordance to DIN 18534-1 (up to and including): | W3-I |
| Sealing water height: | 60 mm |
| Discharge rate (l/s) with 10 mm threshold: | 1,6 |
| Discharge rate (l/s) with 20 mm threshold: | 1,7 |
| Mechanical backwater flaps: | 2 |
| General characteristics | |
| Colour: | black |
| Standard: | EN 1253 |

| | |
|-------------------------|--------------------------------------|
| Nominal size (DN): | 100 |
| Type of wastewater: | without sewage |
| Installation situation: | floor slab installation |
| Backwater protection: | Type 5 |
| Sustainable: | through the use of recycled material |

Dimensions

| | |
|-------------------------------|-------------------------------------|
| Net weight: | 4,37 kg |
| Gross weight: | 4,88 kg |
| Diameter: | 295 mm |
| Cutout dimension, width: | 310 mm |
| Cutout dimension, length: | 310 mm |
| Adjustment range: | 12 - 28 |
| Installation depth: | 309 - 408 mm |
| Type of height adjustability: | vertically adjustable upper section |
| Height: | 270 mm |
| Packaging dimension: | length |
| Packaging dimension: | width |
| Packaging dimension: | height |

Tank/drain body

| | |
|-----------------|----------|
| Socket version: | vertical |
|-----------------|----------|

Coverage features

| | |
|------------------|---------------------------------------|
| Type of cover: | Slotted cover made of stainless steel |
| Cover material: | Stainless steel 14301 |
| Colour of cover: | silver |
| Width of cover: | 200 mm |
| Height of cover: | 25 mm |
| Length of cover: | 200 mm |
| Load class: | K 3 (EN 1253-1) |