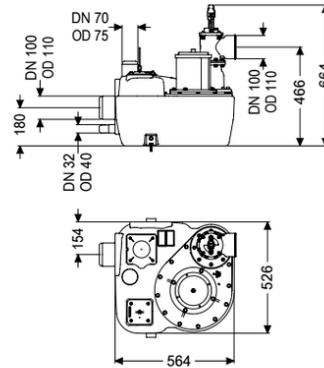
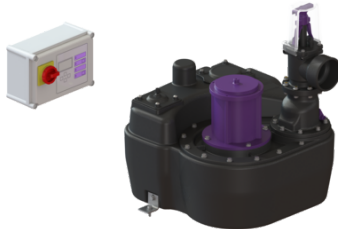


## Lifting station Aqualift F Mono Mono, Comfort, SPF 1500-S3, shut-off val



### Article information

Item no.: 28753  
 GTIN: 4026092054536  
 Price group: 20

### Advantages

- Different performance classes available
- Pressure sensor for reliable pneumatic level measurement
- Including sound absorption mat

### Description

The lifting station for faecal and faecal-free wastewater is equipped with a submersible pump and a backflow preventer. The collection tank made of permanently resistant polymer (PE) offers universal connection options and has a screwed access cover.

#### Variant

|   |                                |
|---|--------------------------------|
| Type of system:                             | Single unit                    |
| Shut-off valve:                             | Shut-off valve made of polymer |
| Retaining bracket for the lift protection:  | yes                            |
| Tested sound insulation as per test report: | yes                            |
| Rim width:                                  | Control unit                   |
| Backwater protection:                       | integrated                     |
| Pressure pipe connection:                   | horizontal                     |

#### General characteristics

|                         |  |
|-------------------------|--|
| Colour:                 | black  |
| Standard:               | EN 12050-1   |
| Type of wastewater:     | with sewage  |
| Installation situation: | free-standing installation   |
| Delivery state:         | Installation-ready (electrical components, connection parts must be connected on site) |
| System type:            | Mono   |

**Dimensions**

|                      |         |
|----------------------|---------|
| Net weight:          | 42 kg   |
| Gross weight:        | 49,8 kg |
| Width:               | 525 mm  |
| Height:              | 664 mm  |
| Length:              | 564 mm  |
| Packaging dimension: | width   |
| Packaging dimension: | height  |
| Packaging dimension: | length  |

**Tank/drain body**

|   |        |
|---|--------|
| Pressure pipe connection (DN):                      | 100    |
| Pressure pipe connection (OD):                      | 110 mm |
| Connection for manual diaphragm pump (DN):          | 32     |
| Venting connection (DN):                            | 70     |
| Distance from centre of outlet pipe to tank bottom: | 466 mm |
| Distance pipe bottom inlet to tank bottom:          | 125 mm |
| Distance from centre of inlet pipe to tank bottom:  | 180 mm |
| Number of inlets:                                   | 150 mm |
| Inlet nominal size (DN):                            | 110 mm |
| Inlet nominal size (DN):                            | 100    |
| Inlet type:   | 1      |
| Pumping volume:                                     | 20 l   |
| Tank volume:  | 50 l   |

**Pumping device**

|  |                                |
|--|--------------------------------|
| Pump control:                                      | SPF 1500                       |
| Number of pumps:                                   | 1                              |
| Weight:  | 24 kg                          |
| Connection type:                                   | Direct connection              |
| Rated current:                                     | 2,7 A                          |
| Length of mains cable for pump:                    | 5 m                            |
| Self-diagnosis system (SDS):                       | I                              |
| Insulation class:                                  | F                              |
| Cos phi - power factor:                            | 0,77                           |
| Protection class control unit:                     | IP 68 (3m/48h)                 |
| DSC:   | integrated                     |
| Max. temperature (permanent) of conveyed material: | 40 °C                          |
| Max. pumping capacity:                             | 40 m <sup>3</sup> /h           |
| Max. pumping height:                               | 8 m                            |
| Speed:   | 1415 U/min                     |
| Power P1:  | 1,4 kW                         |
| Power P2:  | 1,1 kW                         |
| Operating mode:                                    | S3 - 50 %                      |
| Type of pump connection cable:                     | H07RN-F 7G 1.5 mm <sup>2</sup> |
| Impeller type:                                     | Multi-vane impeller            |

|                                       |                   |
|---------------------------------------|-------------------|
| Free passage:                         | 40 mm             |
| Control                               |                   |
| Motor protection switch:              | yes               |
| Alarm sensor:                         | Immersion pipe    |
| Level measurement instrument:         | Immersion pipe    |
| Type of level measurement:            | pneumatic         |
| Protection class probe:               | IP 54             |
| Operating voltage:                    | 400 V             |
| Connection type:                      | Direct connection |
| Potential-free contact:               | yes               |
| GSM interface:                        | yes               |
| Log book function:                    | yes               |
| Multi-line display:                   | yes               |
| Battery buffering:                    | yes               |
| Self-diagnosis system (SDS):          | yes               |
| Max. permissible switching frequency: | Comfort           |