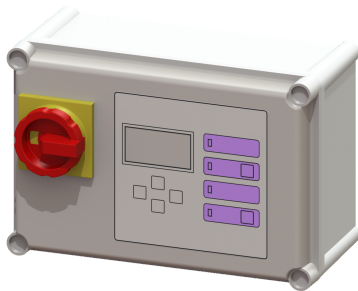


Comfort control unit 400V, Aqualift Mono, 2.5-4.0 A



Article information

Item no.: 28755
 GTIN: 4026092055007
 Price group: 20

Advantages

- Self-diagnosis system (SDS)
- Potential-free contact for faults/warnings
- Reminder for when maintenance is due

Description

Komfort control unit for lifting stations or pumping stations. Suitable for 400 V single stations. Optional connection option for float switches, conductivity probes and level probe on the terminal strip. User-friendly menu navigation in multi-line display. Menu navigation in six languages. Simple selection of the system to be connected with preset, system-specific operating parameters. Display of the current measured values. Simple adjustment of the function-related parameters, with integrated operating hour counter. With self-diagnosis system (SDS) for monitoring pump, sensors and battery back-up. Improper installation or operating faults trigger an optical and acoustic alarm signal. Forwarding of a collective fault and alarm signals via optional potential-free contact or integrated serial interface for GSM modem.

Variant	
Series:	ab 03/2010
Type of system:	Single unit

General characteristics	
Colour:	grey
System type:	Mono

Dimensions	
Net weight:	2,47 kg
Gross weight:	3,19 kg
Packaging dimension:	length
Packaging dimension:	width
Packaging dimension:	height

Control	
Control unit:	Comfort
Motor protection switch:	yes
Protection class control unit:	IP 54

Operating voltage:	400 V
Potential-free contact:	yes
GSM interface:	yes
USB interface:	no
Log book function:	yes
Multi-line display:	yes
Battery buffering:	yes
Self-diagnosis system (SDS):	yes
Rated current:	2,5 - 4 A