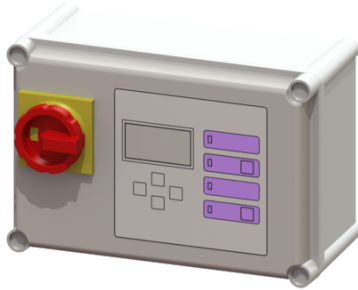


## Comfort control unit 400V, Aqualift Mono, 2.5-4.0 A, ATEX



### Article information

Item no.: 28759  
 GTIN: 4026092054598  
 Price group: 20

### Advantages

- Self-diagnosis system (SDS)
- Potential-free contact for faults/warnings
- Reminder for when maintenance is due

### Description

Comfort control unit suitable for 400V single stations with submersible pumps with ATEX approval. User-friendly menu navigation in multi-line display. With self-diagnosis system (SDS) and reminder when maintenance is due. Display of the current measured values. Easy setting of the function-relevant parameters, operating hours counter. Optional forwarding of alarm and collective fault messages via GSM interface.

#### Variant

Series: ab 03/2010  
 Type of system: Single unit

#### General characteristics

Colour: grey  
 System type: Mono

#### Dimensions

Net weight: 2,47 kg  
 Gross weight: 3,19 kg  
 Packaging dimension: length  
 Packaging dimension: width  
 Packaging dimension: height

#### Pumping device

Connection type: Direct connection  
 Rated current: 2,5 - 4 A

#### Control

Control unit: Comfort  
 Motor protection switch: yes  
 Protection class control unit: IP 54  
 Connection type: Direct connection

Potential-free contact:	yes
GSM interface:	yes
USB interface:	no
Log book function:	yes
Multi-line display:	yes
Battery buffering:	yes
Self-diagnosis system (SDS):	yes
Rated current:	2,5 - 4 A