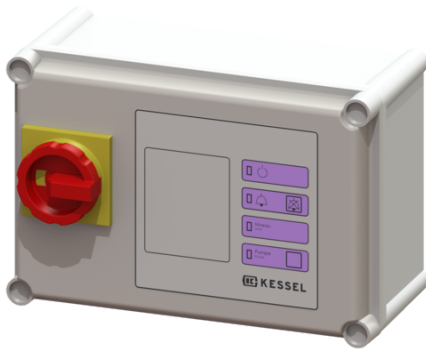


Comfort control unit 400V, Aqualift Mono, 6.3-10.0 A



Article information

Item no.: 28781
 GTIN: 4026092058732
 Price group: 20

Advantages

- Self-diagnosis system (SDS)
- Potential-free contact for faults/warnings
- Reminder for when maintenance is due

Description

Comfort control unit suitable for 400V single stations. User-friendly menu navigation in multi-line display. With self-diagnosis system (SDS) and reminder when maintenance is due. Display of the current measured values. Easy setting of the function-relevant parameters, operating hours counter. Optional forwarding of alarm and collective fault messages via GSM interface.

Variant

Series: ab 03/2010
 Type of system: Single unit

General characteristics

Colour: grey
 System type: Mono

Dimensions

Net weight: 3,17 kg
 Gross weight: 3,83 kg
 Packaging dimension: length
 Packaging dimension: width
 Packaging dimension: height

Pumping device

Rated current: 6,3 - 10 A

Control

Control unit: Comfort
 Motor protection switch: yes
 Protection class control unit: IP 54
 Potential-free contact: yes
 GSM interface: yes
 USB interface: no

| | |
|------------------------------|------------|
| Log book function: | yes |
| Multi-line display: | yes |
| Battery buffering: | yes |
| Self-diagnosis system (SDS): | yes |
| Rated current: | 6,3 - 10 A |