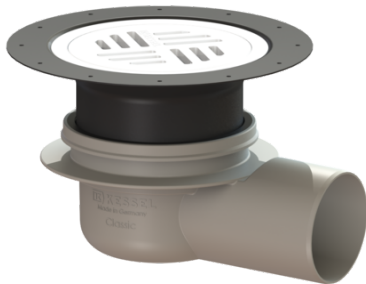


Bathroom drain, Classic DN 70, horizontal, Slotted grating, K 3



Article information

Item no.: 40170.30
 GTIN: 4026092028889
 Price group: 10

Advantages

- Odour trap height: 50 mm
- Lip seal fixed on the drain body
- System 100 - modular design

Description

The Classic bathroom drain is suitable for indoor floor drainage. The drain made of ABS is equipped with a telescopic, height-adjustable upper section made of polymer, a removable odour trap as well as a secure, reliably installed seal.

Variant

Sealing water height: 50 mm
 Discharge rate (l/s) with 20 mm backwater: 0,8

General characteristics

Nominal size (DN): 70
 ATEX: no
 Odour trap: included

Dimensions

Vertical adjustment: 25 - 65 mm
 Net weight: 0,31 kg
 Gross weight: 0,57 kg
 Diameter: 120 mm
 Type of height adjustability: vertically adjustable upper section
 Length: 220 mm
 Width: 180 mm
 Height: 90 mm
 Packaging dimension: length
 Packaging dimension: width
 Packaging dimension: height

Tank/drain body

Number of outlets: 1
 Material of drain body: ABS
 Socket version: lateral

Coverage features

Type of cover:

Round slotted cover

Cover material:

Polymer

Colour of cover:

grey

Frame material:

ABS

Load class:

K 3 (EN 1253-1)

Upper section material:

ABS