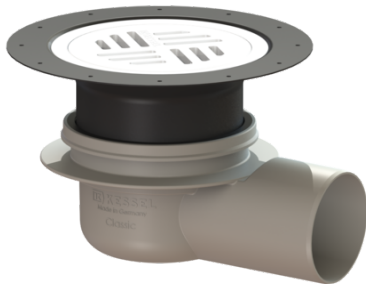


## Bathroom drain, Classic DN 70, horizontal, Slotted grating, K 3



### Article information

Item no.: 40170.30  
GTIN: 4026092028889  
Price group: 10

### Advantages

- Odour trap height: 50 mm
- Lip seal fixed on the drain body
- System 100 - modular design

### Description

The Classic bathroom drain is suitable for indoor floor drainage. The drain made of ABS is equipped with a telescopic, height-adjustable upper section made of polymer, a removable odour trap as well as a secure, reliably installed seal.

#### Variant

Sealing water height: 50 mm  
Discharge rate (l/s) with 20 mm backwater: 0,8

#### General characteristics

Nominal size (DN): 70

#### Dimensions

Vertical adjustment: 25 - 65 mm  
Net weight: 0,31 kg  
Gross weight: 0,57 kg  
Diameter: 120 mm  
Vertical adjustment: vertically adjustable upper section  
Width: 180 mm  
Height: 90 mm  
Length: 220 mm  
Packaging dimension: width  
Packaging dimension: height  
Packaging dimension: length

#### Tank/drain body

Number of outlets: 1  
Material of drain body: ABS  
System: lateral

#### Coverage features

Type of cover: Round slotted cover

Cover material:	Polymer
Colour of cover:	grey
Frame material:	ABS
Load class:	K 3 (EN 1253-1)
Upper section material:	ABS
Odour trap:	included