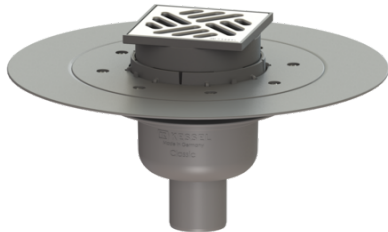


## Classic bathroom drain glued fl. DN 50, vertical, Slotted grating, K 3



### Article information

Item no.: 40250.90  
GTIN: 4026092029459  
Price group: 10

### Advantages

- Odour trap height: 50 mm
- Lip seal fixed on the drain body
- System 100 - modular design

### Description

The Classic bathroom drain is suitable for indoor floor drainage. The drain made of ABS is equipped with a telescopic, height-adjustable upper section made of polymer, a removable odour trap as well as a secure, reliably installed seal. Including glued flange and mating flange for clamping PVC sheeting (vapour barriers) or for alternative waterproofing layers (additional honeycomb fabric required).

#### Variant

Waterproofing layer on the upper section:	Adhesive flange (suitable for moisture barriers)
Waterproofing layer on the drain body:	Adhesive flange (suitable for moisture barriers)
Water supply:	W3-I
Sealing water height:	50 mm
Discharge rate (l/s) with 20 mm backwater:	0,8

#### General characteristics

Standard:	EN 1253-1
Nominal size (DN):	50
Outer diameter (OD):	50 mm

#### Dimensions

Vertical adjustment:	20 - 60 mm
Net weight:	0,55 kg
Gross weight:	0,91 kg
Cutout dimension, width:	350 mm
Cutout dimension, length:	350 mm
Vertical adjustment:	vertically adjustable upper section
Width:	332 mm
Length:	332 mm
Packaging dimension:	width
Packaging dimension:	height
Packaging dimension:	length

Tank/drain body	
Number of outlets:	1
Material of drain body:	ABS
System:	vertical
Coverage features	
Type of cover:	Slotted cover
Cover material:	Stainless steel 14301
Colour of cover:	silver
Width of cover:	100 mm
Length of cover:	100 mm
Frame material:	ABS
Cover locking:	placed
Load class:	K 3 (EN 1253-1)
Rim length:	107 mm
Rim material:	107 mm
Shape of upper section:	square
Upper section material:	ABS
Odour trap:	included