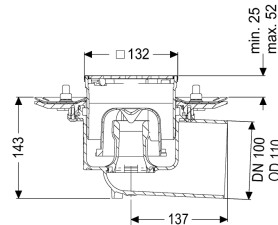


## Practicus floor drain press.seal. DN 100, horizontal, Design grating



### Article information

Item no.: 45119.63  
 GTIN: 4026092034064  
 Price group: 10

### Advantages

- Hygiene: hygienic, absolutely corrosion-free and durable material
- Sound insulation: outstanding sound insulation effect confirmed by the Fraunhofer Institute

### Description

The Practicus polymer floor drain is used for point drainage and is equipped with a pressure sealing flange as well as a removable odour trap, a lip seal and a temporary protective cover. Including telescopic height-adjustable upper section made of ABS. The drain meets particular sound insulation requirements in accordance with the measurements of the Fraunhofer Institute in Stuttgart. The pressure sealing flange with bolts and screws made of stainless steel is used for the clamping or welding of bitumen and polymer bitumen sheets as well as for polymer and elastomer sealing sheets. The outlet socket is suitable for connection to SML cast iron pipes. With connection option for equipotential bonding.

|  |   |
|--|---|
| Variant                                    |   |
| System:                                    | 125   |
| Waterproofing layer on the upper section:  | Connection flange   |
| Waterproofing layer on the drain body:     | Press sealing flange (suitable for creating watertight seals) |
| Sealing water height:                      | 50 mm   |
| Discharge rate (l/s) with 20 mm threshold: | 1,5   |
| General characteristics                    |   |
| Standard:                                  | EN 1253-1   |
| Nominal size (DN):                         | 100   |
| Outer diameter (OD):                       | 110 mm  |
| Odour trap:                                | included  |
| Sustainable:                               | through the use of recycled material                          |

#### Dimensions

|                               |                                     |
|-------------------------------|-------------------------------------|
| Net weight:                   | 2,41 kg                             |
| Gross weight:                 | 2,77 kg                             |
| Type of height adjustability: | vertically adjustable upper section |
| Length:                       | 273 mm                              |
| Width:                        | 273 mm                              |
| Packaging dimension:          | length                              |
| Packaging dimension:          | width                               |
| Packaging dimension:          | height                              |

#### Tank/drain body

|                                  |  |
|----------------------------------|--|
| Number of outlets:               | 1  |
| Connection inlet/outlet sockets: | The outlet spigot is suitable for connection to SML pipes. |
| Material of drain body:          | PP   |
| Socket version:                  | lateral  |

#### Coverage features

|                         |   |
|-------------------------|---|
| Type of cover:          | Design cover  |
| Cover material:         | Stainless steel 14301                               |
| Colour of cover:        | silver  |
| Width of cover:         | 120 mm  |
| Height of cover:        | 16 mm   |
| Length of cover:        | 120 mm  |
| Surface:                | ground  |
| Frame material:         | Stainless steel 14301                               |
| Locking:                | Lock & Lift   |
| Load class:             | L 15 (EN 1253-1)                                    |
| Grating design:         | Kessel  |
| Slip resistance class:  | R9 according to DIN 51130; C according to DIN 51097 |
| Rim width:              | 132 mm  |
| Rim length:             | 132 mm  |
| Upper section:          | vertically adjustable                               |
| Shape of upper section: | square  |
| Upper section material: | ABS   |