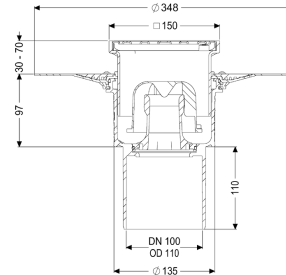


## Practicus floor drain glued flan. DN 100, vertical, Slotted grating



### Article information

Item no.: 45218.11  
 GTIN: 4026092033180  
 Price group: 10

### Advantages

- Hygiene: hygienic, absolutely corrosion-free and durable material
- Sound insulation: outstanding sound insulation effect confirmed by the Fraunhofer Institute
- Fire protection: combinable with the Fire-Kit for fire and smoke protection

### Description

The Practicus polymer floor drain is used for point drainage and is equipped with a glued flange, as a removable odour trap, a lip seal, and a temporary protective cover. Including telescopic height-adjustable upper section made of ABS. The glued flange with a flange width of 50 mm is suitable for connecting waterproofing layers in accordance with DIN 18534, for all waterproofing classes. The loose flange is used for clamping polymer and elastomer sealing sheets as well as for cold bitumen seals and is therefore only suitable for use with moisture barriers. The drain meets particular sound insulation requirements in accordance with the measurements of the Fraunhofer Institute in Stuttgart.

Variant

System:	125
Waterproofing layer on the upper section:	Connection flange
Waterproofing layer on the drain body:	Adhesive flange (suitable for moisture barriers)
Water exposure class in accordance to DIN 18534-1 (up to and including):	W3-I
Sealing water height:	50 mm
Discharge rate (l/s) with 20 mm threshold:	2

General characteristics

Standard:	EN 1253-1
Nominal size (DN):	100

Outer diameter (OD):	110 mm
Approval:	Z-19.53-2414,Z-19.53-2414_V,Z-19.17-1719,Z-19.17-1719_V
Odour trap:	included
Dimensions	
Vertical adjustment:	30 - 70 mm
Net weight:	1,66 kg
Gross weight:	2,25 kg
Cutout dimension, width:	350 mm
Cutout dimension, length:	350 mm
Type of height adjustability:	vertically adjustable upper section
Length:	348 mm
Width:	348 mm
Packaging dimension:	length
Packaging dimension:	width
Packaging dimension:	height
Tank/drain body	
Number of outlets:	1
Connection inlet/outlet sockets:	The outlet spigot is suitable for connection to SML pipes.
Material of drain body:	PP
Socket version:	vertical
Coverage features	
Type of cover:	Slotted cover
Cover material:	Stainless steel 14301
Colour of cover:	silver
Width of cover:	138 mm
Length of cover:	138 mm
Frame material:	ABS
Locking:	screwed
Load class:	K 3 (EN 1253-1)
Grating design:	Kessel
Rim width:	150 mm
Rim length:	150 mm
Upper section:	vertically adjustable
Upper section material:	ABS