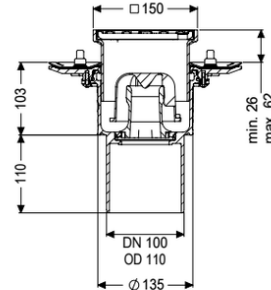


Practicus floor drain press.seal. DN 100, vertical, Slotted grating



Article information

Item no.: 45219.11
 GTIN: 4026092033098
 Price group: 10

Advantages

- Hygiene: hygienic, absolutely corrosion-free and durable material
- Sound insulation: outstanding sound insulation effect confirmed by the Fraunhofer Institute
- Fire protection: combinable with the Fire-Kit for fire and smoke protection

Description

The Practicus polymer floor drain is used for point drainage and is equipped with a pressure sealing flange as well as a removable odour trap, a lip seal and a temporary protective cover. Including telescopic height-adjustable upper section made of ABS. The drain meets particular sound insulation requirements in accordance with the measurements of the Fraunhofer Institute in Stuttgart. The pressure sealing flange with bolts and screws made of stainless steel is used for the clamping or welding of bitumen and polymer bitumen sheets as well as for polymer and elastomer sealing sheets. The outlet socket is suitable for connection to SML cast iron pipes. With connection option for equipotential bonding.

Variant	
System:	125
Waterproofing layer on the upper section:	Connection flange
Waterproofing layer on the drain body:	Press sealing flange (suitable for creating watertight seals)
Sealing water height:	50 mm
Discharge rate (l/s) with 20 mm backwater:	2
General characteristics	
Standard:	EN 1253-1
Nominal size (DN):	100
Outer diameter (OD):	110 mm

Dimensions

Net weight:	2,87 kg
Gross weight:	3,5 kg
Vertical adjustment:	vertically adjustable upper section
Width:	273 mm
Length:	273 mm
Packaging dimension:	width
Packaging dimension:	height
Packaging dimension:	length

Tank/drain body

Number of outlets:	1
Connection inlet/outlet sockets:	The outlet spigot is suitable for connection to SML pipes.
Material of drain body:	PP
System:	vertical

Coverage features

Type of cover:	Slotted cover
Cover material:	Stainless steel 14301
Colour of cover:	silver
Width of cover:	138 mm
Height of cover:	16 mm
Length of cover:	138 mm
Frame material:	ABS
Cover locking:	screwed
Load class:	K 3 (EN 1253-1)
Grating colour:	Kessel
Rim length:	150 mm
Rim material:	150 mm
Upper section:	vertically adjustable
Upper section material:	ABS
Odour trap:	included