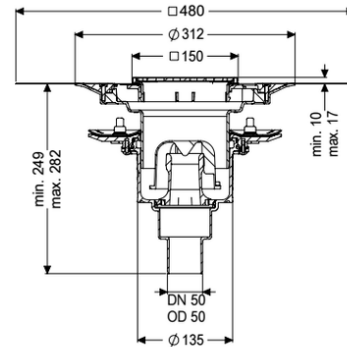
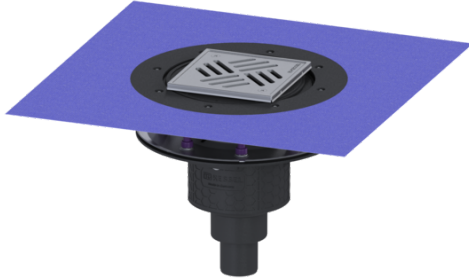


Practicus floor drain press.seal. DN 50, vert., Variofix, Slotted grating



Article information

Item no.: 45259.51
 GTIN: 4026092034125
 Price group: 10

Advantages

- Hygiene: hygienic, absolutely corrosion-free and durable material
- Sound insulation: outstanding sound insulation effect confirmed by the Fraunhofer Institute
- Fire protection: combinable with the Fire-Kit for fire and smoke protection

Description

The Practicus polymer floor drain is used for point drainage and is equipped with a pressure sealing flange as well as a removable odour trap, a lip seal and a temporary protective cover. Including telescopic height-adjustable upper section made of ABS. The drain meets particular sound insulation requirements in accordance with the measurements of the Fraunhofer Institute in Stuttgart. The pressure sealing flange with bolts and screws made of stainless steel is used for the clamping or welding of bitumen and polymer bitumen sheets as well as for polymer and elastomer sealing sheets. The outlet socket is suitable for connection to SML cast iron pipes. With connection option for equipotential bonding.

| | |
|--|---|
| Variant | |
| System: | 125 |
| Waterproofing layer on the upper section: | Enclosed sealing collar to be glued (bd) according to DIN 18534 |
| Waterproofing layer on the drain body: | Press sealing flange (suitable for creating watertight seals) |
| Sealing water height: | 50 mm |
| Discharge rate (l/s) with 20 mm backwater: | 2,1 |

General characteristics

| | |
|-------------------------|-------------------------------------|
| Standard: | EN 1253-1 |
| Nominal size (DN): | 50 |
| Outer diameter (OD): | 50 mm |
| Dimensions | |
| Vertical adjustment: | 10 - 18 mm |
| Net weight: | 2,91 kg |
| Gross weight: | 3,9 kg |
| Vertical adjustment: | vertically adjustable upper section |
| Width: | 273 mm |
| Length: | 273 mm |
| Packaging dimension: | width |
| Packaging dimension: | height |
| Packaging dimension: | length |
| Tank/drain body | |
| Number of outlets: | 1 |
| Material of drain body: | PP |
| System: | vertical |
| Coverage features | |
| Type of cover: | Slotted cover |
| Cover material: | Stainless steel 14301 |
| Colour of cover: | silver |
| Width of cover: | 138 mm |
| Length of cover: | 138 mm |
| Frame material: | Stainless steel 14301 |
| Cover locking: | screwed |
| Load class: | K 3 (EN 1253-1) |
| Grating colour: | Kessel |
| Rim length: | 150 mm |
| Rim material: | 150 mm |
| Upper section: | adjustable in three dimensions |
| Upper section material: | ABS |
| Odour trap: | included |