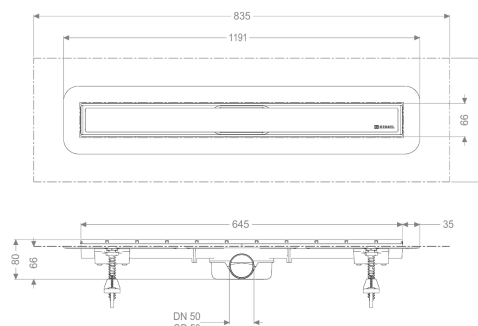
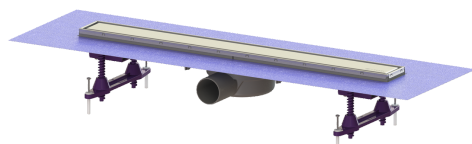


Shower channel Linearis Compact L: 650 mm, DN 50, WaD, 304 SST cov., K 3



Article information

Item no.: 45600.62M
GTIN: 4026092078907
Price group: 10

Advantages

- Individual design with reversible stainless steel insert
- Low installation depth
- Ready-to-install complete set

Description

The Linearis Compact shower channel with welded on drain body made of ABS is suitable for indoor linear drainage. If inserted upside down, the stainless steel insert can be tiled individually. Including prepared seepage water openings and odour trap.

Variant

System: 125

Seepage opening: prepared

Waterproofing layer on the upper section: Factory-fitted sealing collar (WaD) according to DIN 18534

Water exposure class in accordance to DIN W3-I

18534-1 (up to and including):

Sealing water height: 22 mm

Discharge rate (l/s) with 10 mm threshold: 0,6

Discharge rate (l/s) with 20 mm threshold: 0,7

Discharge rate (l/s) without threshold: 0,5 mm

General characteristics

Nominal size (DN): 50

Outer diameter (OD): 50 mm

Odour trap: included

Dimensions

Net weight:	1,9 kg
Gross weight:	2,27 kg
Outer dimension, length:	715 mm
Installation depth:	80 - 140 mm
Width:	191 mm
Height:	80 mm
Packaging dimension:	length
Packaging dimension:	width
Packaging dimension:	height
Tank/drain body	
Number of outlets:	1
Material of drain body:	ABS
Coverage features	
Type of cover:	Stainless steel cover
Cover material:	Stainless steel 14301
Colour of cover:	silver
Frame material:	Stainless steel 14301
Load class:	K 3 (EN 1253-1)
Grating design:	optionally tileable
Rim width:	66 mm
Rim length:	650 mm
Max. flooring height:	15 mm
Upper section material:	ABS