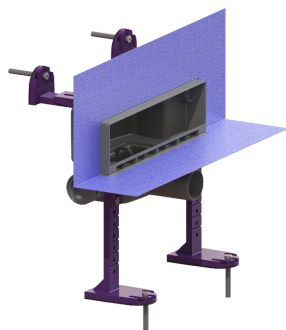


Drain body, Scada wall drain DN 50, with fixed waterproofing membrane



Article information

Item no.: 48000M
 GTIN: 4026092079096
 Price group: 10

Advantages

- Award-winning design
- Flexible & convenient installation options
- Alternative odour trap Multistop

Description

Used in combination with Scada drain covers, the drain body for Scada wall drains is suitable for indoor wall/floor drainage, is equipped with an odour trap and provides connection options at the front, left and right-hand side.

Variant	
System:	125
Heating:	without
Lighting:	without
Waterproofing layer on the drain body:	Factory-fitted sealing collar (WaD) according to DIN 18534
Sealing water height:	22 mm
Discharge rate (l/s) with 20 mm threshold:	0,5
General characteristics	
Nominal size (DN):	50
Outer diameter (OD):	58 mm
Odour trap:	included
Dimensions	
Net weight:	1,21 kg
Gross weight:	1,94 kg
Length:	362 mm
Width:	195 mm
Height:	353 mm
Packaging dimension:	length
Packaging dimension:	width
Packaging dimension:	height
Tank/drain body	
Number of outlets:	1

Material of drain body: ABS
Socket version: lateral

Coverage features
Frame material: ABS
Upper section material: ABS