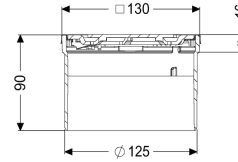
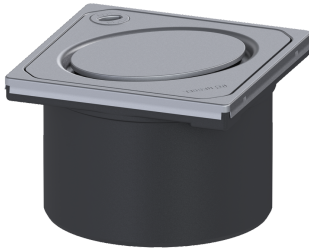


## Upper section Oval des cov, 304 SST, Lock&Lift, L 15



### Article information

Item no.: 48202  
GTIN: 4026092028759  
Price group: 10

### Advantages

- Multiple combinations with suitable drain bodies

### Description

Used in combination with a drain body of the KESSEL modular system, the upper section is suitable for indoor point drainage.

Variant

System: 125

General characteristics

Sustainable: through the use of recycled material

Dimensions

Net weight: 0,72 kg

Gross weight: 0,72 kg

Height: 90 mm

Packaging dimension: length

Packaging dimension: width

Packaging dimension: height

Coverage features

Type of cover: Design cover

Cover material: Stainless steel 14301

Colour of cover: silver

Height of cover: 16 mm

Min. flooring height: 16 mm

Surface: ground

Frame material: Stainless steel 14301

Locking:	Lock & Lift
Load class:	L 15 (EN 1253-1)
Grating design:	Oval
Rim width:	132 mm
Rim length:	132 mm
Max. flooring height:	58 mm
Shape of upper section:	square
Upper section material:	ABS