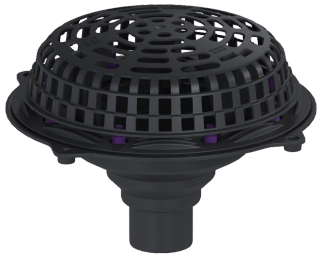


## Roof drain Ecoguss Press. fl., DN 70, without heating



### Article information

Item no.: 48370  
GTIN: 4026092039328  
Price group: 40

### Advantages

- Made of recyclable composite
- Permanently corrosion-free surface

### Description

The Ecoguss roof drain for flat roof surfaces is used for point drainage and is equipped with a pressure sealing flange as well as a gravel trap. The recyclable composite material Ecoguss fulfils the highest sound protection requirements, is resistant to aggressive media, can withstand temperatures up to 400 degrees Celsius and has a permanently corrosion-free surface. The pressure sealing flange with bolts and screws made of stainless steel is used for the clamping or welding of bitumen and polymer bitumen sheets as well as for polymer and elastomer sealing sheets. Only the sealing sheets tested by the manufacturer may be used for watertight seals. Separate equipotential bonding is not necessary. Note:

Please consult the KESSEL Service Centre for trapezoidal roof areas greater than 2500 sqm.

#### Variant

|  |   |
|--|---|
| System:                                | 200   |
| Heating:                               | without   |
| Waterproofing layer on the drain body: | Press sealing flange (suitable for creating watertight seals) |

#### General characteristics

|                      |         |
|----------------------|---------|
| Standard:            | EN 1253 |
| Nominal size (DN):   | 70      |
| Outer diameter (OD): | 78 mm   |

#### Dimensions

|               |         |
|---------------|---------|
| Net weight:   | 2,43 kg |
| Gross weight: | 3,04 kg |
| Diameter:     | 365 mm  |

|                           |        |
|---------------------------|--------|
| Cutout dimension, width:  | 227 mm |
| Cutout dimension, length: | 227 mm |
| Length:                   | 365 mm |
| Width:                    | 365 mm |
| Packaging dimension:      | length |
| Packaging dimension:      | width  |
| Packaging dimension:      | height |

|                         |         |
|-------------------------|---------|
| Tank/drain body         |         |
| Material of drain body: | Ecoguss |

|                         |             |
|-------------------------|-------------|
| Coverage features       |             |
| Type of cover:          | Gravel trap |
| Cover material:         | Polymer     |
| Colour of cover:        | black       |
| Shape of upper section: | round       |
| Upper section material: | Ecoguss     |