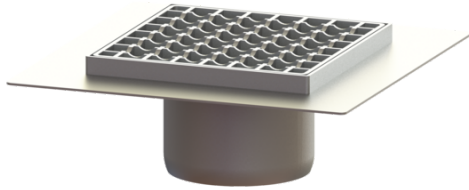


## Ferrofix upper section Sys 125, Gl fl., slot grat., 200x200 mm



### Article information

Item no.: 54917  
GTIN: 4026092072431  
Price group: 70

### Advantages

- Made of a particularly hygienic and mechanically highly resistant stainless steel
- Multiple combinations with suitable drain bodies

### Description

Used in combination with a drain body of the KESSEL modular system 125, the stainless steel upper section is suitable for indoor point drainage. The upper section is suitable for thin-layered floorings (e.g. epoxy resin) and has a circumferential adhesive joint edge (15 mm deep and 50 mm folded outwards).

Variant	
System:	125
Note on installation depth:	For load class M 125, on-site shimming necessary
Waterproofing layer on the upper section:	Adhesive flange (suitable for moisture barriers)

General characteristics	
Standard:	EN 1253-1

Dimensions	
Net weight:	4,34 kg
Gross weight:	4,78 kg
Width:	300 mm
Height:	100 mm
Length:	300 mm
Packaging dimension:	width
Packaging dimension:	height
Packaging dimension:	length

Coverage features	
Type of cover:	Slotted cover
Cover material:	Stainless steel 14301
Height of cover:	15 mm
Surface:	pickled
Cover locking:	unlocked
Load class:	L 15 / M 125 (EN 1253-1)

Rim length:	200 mm
Rim material:	200 mm
Shape of upper section:	square
Upper section material:	Stainless steel 14301
Mesh size:	23 x 23 mm