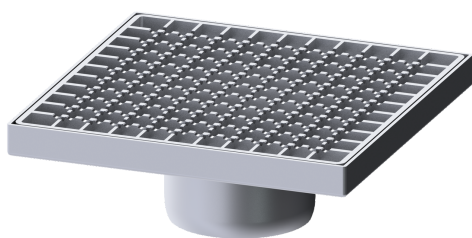


Ferrofix upper section w/o glue flange, 300x300mm, slot grat.



Article information

Item no.: 54926
 GTIN: 4026092099919
 Price group: 70

Advantages

- Made of a particularly hygienic and mechanically highly resistant stainless steel
- Multiple combinations with suitable drain bodies

Description

Used in combination with a drain body of the KESSEL modular system 125, the stainless steel upper section is suitable for indoor point drainage.

Variant	
System:	125
Note on installation depth:	For load class M 125, on-site shimming necessary
Waterproofing layer on the upper section:	Connection flange
General characteristics	
Standard:	EN 1253-1
Dimensions	
Net weight:	6,32 kg
Gross weight:	6,67 kg
Length:	300 mm
Width:	300 mm
Height:	110 mm
Packaging dimension:	length
Packaging dimension:	width
Packaging dimension:	height
Coverage features	
Type of cover:	Slotted cover
Cover material:	Stainless steel 14301

Height of cover:	25 mm
Surface:	pickled
Locking:	placed
Load class:	L 15 / M 125 (EN 1253-1)
Shape of upper section:	square
Upper section material:	Stainless steel 14301
Mesh size:	23 x 23 mm