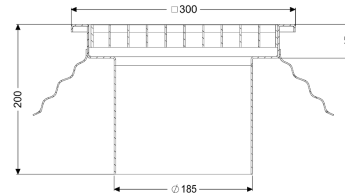
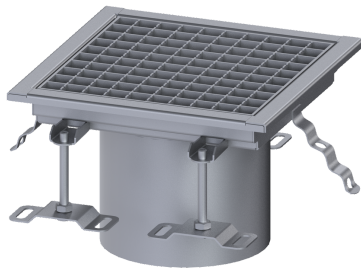


Upper section Ferrofix w/o glued flange, 300x300mm, grate, L 15



Article information

Item no.: 55135
GTIN: 4026092107607
Price group: 70

Advantages

- Made of a particularly hygienic and mechanically highly resistant stainless steel
- Multiple combinations with suitable drain bodies

Description

Used in combination with a drain body of the KESSEL modular system 185, the stainless steel upper section is suitable for indoor point drainage.

Variant

System: 185

General characteristics

Standard: EN 1253-1

Dimensions

Net weight: 7,2 kg

Gross weight: 7,2 kg

Length: 300 mm

Width: 300 mm

Height: 200 mm

Packaging dimension: length

Packaging dimension: width

Packaging dimension: height

Coverage features

Type of cover: Slotted cover

Cover material: Stainless steel 14301

Load class: L 15 (EN 1253-1)

Grating material: 304 stainless steel

| | |
|-------------------------|-----------------------|
| Shape of upper section: | square |
| Upper section material: | Stainless steel 14301 |
| Cover | |
| Grating material: | 304 stainless steel |