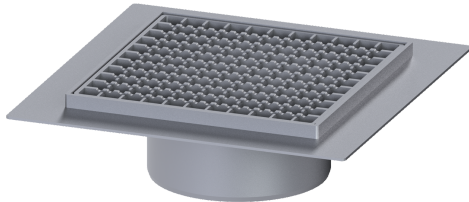


Ferrofix upper section gl. flange Sys200 slot grat, 304SST, 300 x 300 mm



Article information

Item no.: 57415-KF
 GTIN: 4026092095287
 Price group: 70

Advantages

- Made of a particularly hygienic and mechanically highly resistant stainless steel
- Multiple combinations with suitable drain bodies

Description

Used in combination with a drain body of the KESSEL modular system 200, the Ferrofix stainless steel upper section with glued flange is suitable for indoor point drainage.

Variant

| | |
|--|--|
| System: | 200 |
| Waterproofing layer on the upper section: | Adhesive flange (suitable for moisture barriers) |
| Water exposure class in accordance to DIN 18534-1 (up to and including): | W3-I |

Dimensions

| | |
|-------------------------------|-------------------------------------|
| Net weight: | 4,2 kg |
| Gross weight: | 4,65 kg |
| Type of height adjustability: | vertically adjustable upper section |
| Length: | 400 mm |
| Width: | 400 mm |
| Height: | 112 mm |
| Packaging dimension: | length |
| Packaging dimension: | width |
| Packaging dimension: | height |

Coverage features

| | |
|------------------|-----------------------|
| Type of cover: | Slotted cover |
| Cover material: | Stainless steel 14301 |
| Height of cover: | 15 mm |
| Locking: | unlocked |
| Load class: | L 15 (EN 1253-1) |
| Rim width: | 300 mm |
| Rim length: | 300 mm |

Upper section material:
Mesh size:

Stainless steel 14301
23 x 23 mm