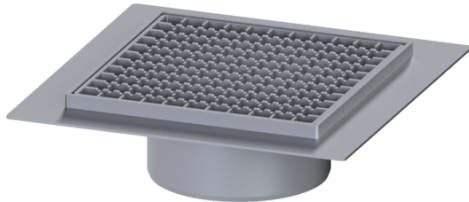


Ferrofix upper section gl. flange Sys200 slot grat, 304SST, 300 x 300 mm



Article information

Item no.: 57415-KF
GTIN: 4026092095287
Price group: 70

Advantages

- Made of a particularly hygienic and mechanically highly resistant stainless steel
- Multiple combinations with suitable drain bodies

Description

Used in combination with a drain body of the KESSEL modular system 200, the Ferrofix stainless steel upper section with glued flange is suitable for indoor point drainage.

| | |
|---|--|
| Variant | |
| System: | 200 |
| Waterproofing layer on the upper section: | Adhesive flange (suitable for moisture barriers) |
| Water supply: | W3-I |

| | |
|----------------------|-------------------------------------|
| Dimensions | |
| Net weight: | 4,2 kg |
| Gross weight: | 4,65 kg |
| Vertical adjustment: | vertically adjustable upper section |
| Width: | 400 mm |
| Height: | 112 mm |
| Length: | 400 mm |
| Packaging dimension: | width |
| Packaging dimension: | height |
| Packaging dimension: | length |

| | |
|-------------------------|-----------------------|
| Coverage features | |
| Type of cover: | Slotted cover |
| Cover material: | Stainless steel 14301 |
| Height of cover: | 15 mm |
| Cover locking: | unlocked |
| Load class: | L 15 (EN 1253-1) |
| Rim length: | 300 mm |
| Rim material: | 300 mm |
| Upper section material: | Stainless steel 14301 |

Mesh size:

23 x 23 mm