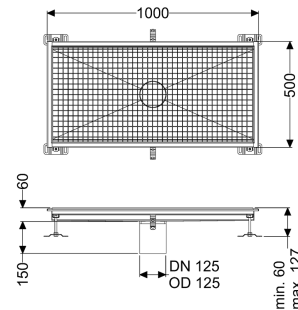
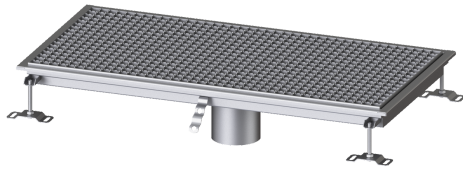


Floor Tray Ferrofix without glued flange, 500x1000mm



Article information

Item no.: 6150100
GTIN: 4026092099391
Price group: 80

Advantages

- Made of particularly a hygienic and mechanically highly resistant stainless steel
- Variably combinable with suitable drain bodies

Description

The Floor tray Ferrofix made of stainless steel with a material thickness of 2.0 mm (pickled in the immersion bath) is equipped with polished visible ridges, longitudinal and transverse slopes, feet for height adjustment and stainless steel outlet nozzles.

Variant

Waterproofing layer on the upper section:

Connection flange

General characteristics

Nominal size (DN):

125

Outer diameter (OD):

125 mm

Dimensions

Length:

1000 mm

Width:

500 mm

Height:

60 mm

Coverage features

Type of cover:

Slotted cover

Colour of cover:

silver

Locking:

placed

Load class:

L 15 (EN 1253-1)

Slip resistance class:

R12 according to DIN 51130; C according to DIN 51097

Upper section material:

Stainless steel 14301