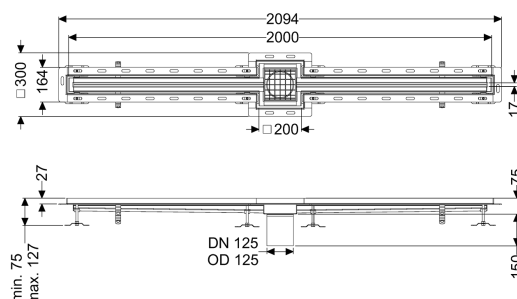


Ferrofix slotted channel Tile conn. angle profile, 17x2000mm,mid.



Article information

Item no.: 6302200
 GTIN: 4026092099827
 Price group: 80

Advantages

- The channel profile is suitable for installation situations with high thermal loads
- Made of particularly a hygienic and mechanically highly resistant stainless steel
- Variably combinable with suitable drain bodies

Description

The Ferrofix slotted channel made of stainless steel with a material thickness of 2.0 mm (pickled in the immersion bath) is equipped with polished visible ridges, longitudinal and transverse slopes, feet for height adjustment and stainless steel outlet nozzles. The channel profile is suitable for installation situations with high thermal loads. The tile connection angle profile protects against tile breakage at the edge.

Variant

Waterproofing layer on the upper section:
 Position of sink trap:

Tile connection angle
 central

General characteristics

Material:	Stainless steel 14301
Nominal size (DN):	125
Outer diameter (OD):	125 mm

Dimensions

Length:	2000 mm
Width:	17 mm
Height:	75 mm

Coverage features

Type of cover:	Slotted cover
----------------	---------------

Colour of cover:	silver
Width of cover:	200 mm
Length of cover:	200 mm
Locking:	placed
Load class:	L 15 (EN 1253-1)
Slip resistance class:	R12 according to DIN 51130; C according to DIN 51097
Slot width:	17 mm