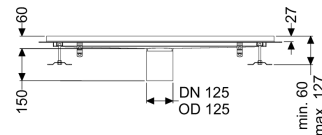
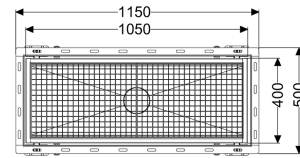
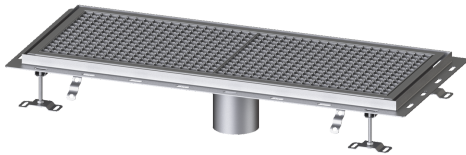


## Ferrofix box channel tile connect. angle profile, 400x1050mm



### Article information

Item no.: 6340100  
GTIN: 4026092099254  
Price group: 80

### Advantages

- The channel profile is suitable for installation situations with high thermal loads
- Made of particularly a hygienic and mechanically highly resistant stainless steel
- Variably combinable with suitable drain bodies

### Description

The Ferrofix box channel made of stainless steel with a material thickness of 2.0 mm (pickled in the immersion bath) is equipped with polished visible ridges, longitudinal and transverse slopes, feet for height adjustment and stainless steel outlet nozzles. The channel profile is suitable for installation situations with high thermal loads. The tile connection angle profile protects against tile breakage at the edge.

#### Variant

Waterproofing layer on the upper section: Tile connection angle

#### General characteristics

Nominal size (DN): 125  
Outer diameter (OD): 125 mm

#### Dimensions

Length: 1050 mm  
Width: 400 mm  
Height: 60 mm

#### Coverage features

Type of cover: Slotted cover  
Colour of cover: silver  
Locking: placed

Load class:	L 15 (EN 1253-1)
Slip resistance class:	R12 according to DIN 51130; C according to DIN 51097
Upper section material:	Stainless steel 14301